



# Maintenance and Assembly Drawings

This section contains mechanical assembly drawings. Use these drawings when troubleshooting or replacing components, and use the associated parts list when ordering replacement parts. Item parts that do not have associated part numbers are not available and need to be ordered using the next highest assembly number.

## Contents

Final Assembly 90/96/140/170XiIII/XiIIIPlus and R-140 Mechanical . . . . .	287
Final Assembly Electrical (XiIII and R-140) . . . . .	289
Final Assembly Electrical XiIIIPlus . . . . .	291
Final Assembly 220XiIII Mechanical . . . . .	293
Print Mechanism for 90/96/140/170/XiIII/XiIIIPlus and R-140 (View 1) . . . . .	295
Print Mechanism for 90/96/140/170/XiIII/XiIIIPlus and R-140 (View 2) . . . . .	299
Print Mechanism XiIII Printers (View 3) . . . . .	301
Print Mechanism XiIIIPlus (View 3) . . . . .	303
Print Mechanism 220XiIII (View 1) . . . . .	305
Print Mechanism 220XiIII/XiIIIPlus (View 2) . . . . .	309
Printhead Support Assembly 90/96XiIII, 140XiIII, and 170XiIII . . . . .	311
Printhead Support Assembly 220XiIII/XiIIIPlus . . . . .	315
Media Supply Hanger . . . . .	316
Optional Media Supply Spindle . . . . .	317
Compliant Roller Assembly . . . . .	318
Ribbon Take-Up Spindle Assembly . . . . .	319
Communication Options . . . . .	321
Ribbon Supply Spindle Assembly . . . . .	323
Media Rewind Assembly . . . . .	325
Cutter Option Assembly . . . . .	327
Cutter Option Assembly (View 2) . . . . .	328

All parts shown in bold face can be purchased. All parts shown in light face italic cannot be purchased, but may be available as part of a maintenance kit. Hardware shown in light face are not available as an individual part, but may be purchased as part of a hardware kit.



**Top: 90X/III™ and 96X/III™**

**Bottom: 140X/III™, 170X/III™, and 220X/III™**



Notes • \_\_\_\_\_

\_\_\_\_\_

\_\_\_\_\_

\_\_\_\_\_

\_\_\_\_\_

\_\_\_\_\_

\_\_\_\_\_

\_\_\_\_\_

\_\_\_\_\_

\_\_\_\_\_

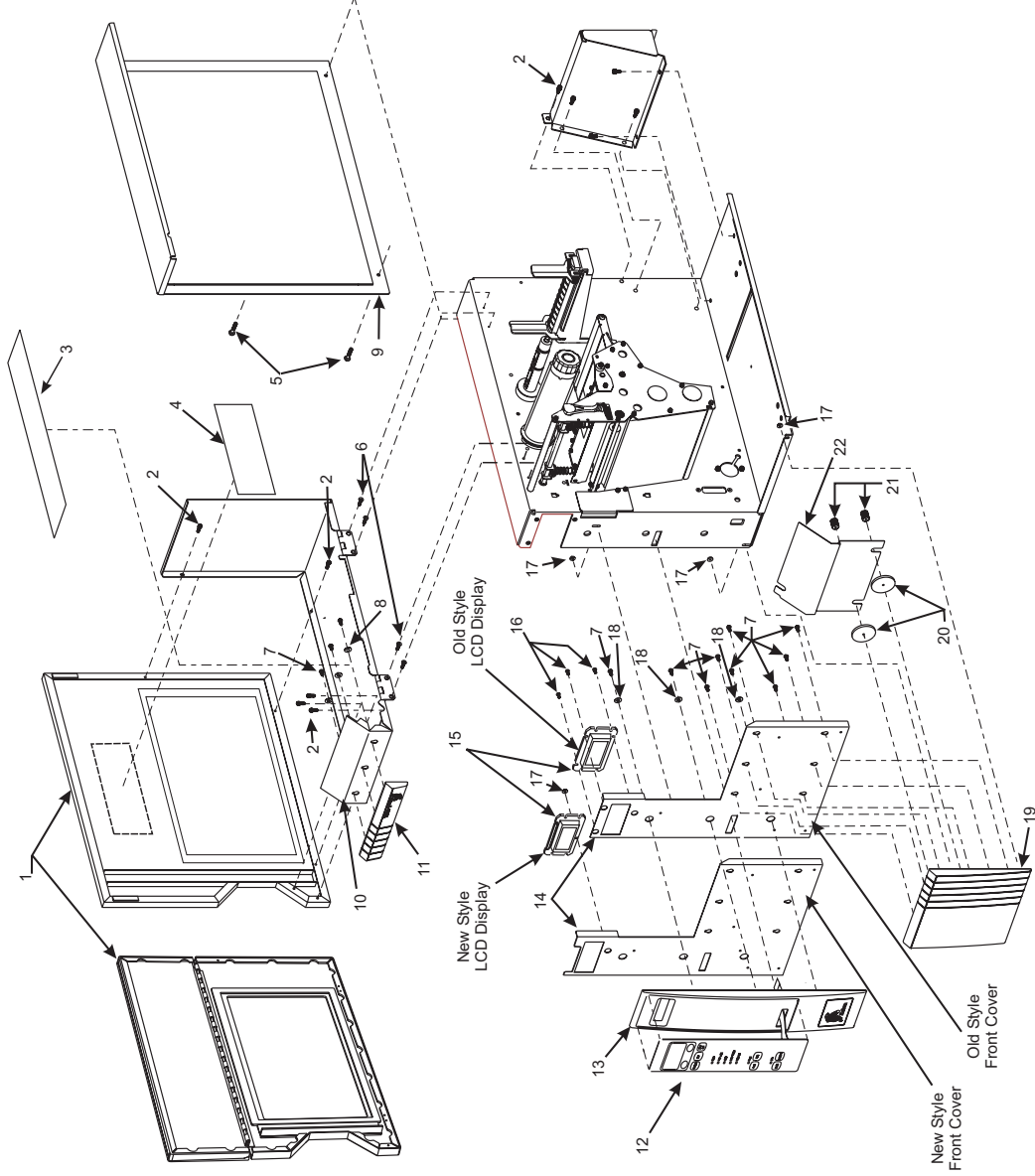
\_\_\_\_\_

Table A • Final Assembly 90/96/140/170XiIII, XiIIIPlus, and R-140 Mechanical

Item	Part Number	Description	Qty.
1	<b>46937</b>	Media Door with Window	1
1	<b>47077M</b>	Media Door Kit, Bi-fold with Window	1
2	<b>HW30392-004</b>	Screw, 6-32 × 0.25, Phillips head (Sold in quantities of 50)	12
3	<b>01861</b>	Supplies Label	1
4	<b>48252</b>	Media Load Label	1
5	<b>46396-006</b>	Screw, 6-32 × 0.37, Phillips head	1
6	<b>30407-008</b>	Screw, 6-32 × 0.5, 3/64 Allen	4
7	<b>HW44114</b>	Screw, M4.2 × 8 Hilo (Sold in quantities of 50)	12
8	<b>HW44356</b>	Washer, 0.198, 0.75 0.085 (Sold in quantities of 25)	3
9	<b>32038</b>	Electronics Cover	1
10	<b>47721M</b>	Cover Media Maintenance Kit (90/96XiIII/XiIIIPlus)	1
10	<b>48721M</b>	Media Maintenance Kit (140XiIII/XiIIIPlus and R-140)	1
10	<b>46721M</b>	Cover Media Maintenance Kit (170XiIII/XiIIIPlus)	1
11	<b>46142</b>	Name Plate, (170XiIII)	1
11	<b>47142</b>	Name Plate, (90XiIII)	1
11	<b>48142</b>	Name Plate, (140XiIII)	1
11	<b>47146</b>	Name Plate, (96XiIII)	1
11	<b>48146</b>	Name Plate, (R-140)	1
11	<b>33150-3</b>	Name Plate, (170XiIIIPlus)	1
11	<b>33150-1</b>	Name Plate, (90XiIIIPlus)	1
11	<b>33150-2</b>	Name Plate, (140XiIIIPlus)	1
11	<b>33150-6</b>	Name Plate, (96XiIIIPlus)	1
12	<b>22021</b>	Switch, Panel Membrane	1
13	<b>22492M</b>	Maintenance Kit, Switch Panel (Complete)	1
14	<b>33036-1</b>	New Style Front Cover, (170XiIII/XiIIIPlus)	1
14	<b>33036-3</b>	New Style Front Cover, (90/96XiIII/XiIIIPlus)	1
14	<b>33036-2</b>	New Style Front Cover, (140XiIII/XiIIIPlus and R-140)	1
15	<b>46755M</b>	Old Style LCD, Back Light XiIII/R-140 (Can be used in new style front cover)	1
15	<b>32043M</b>	New Style LCD, Back Light XiIIIPlus (Can not be used in old style front cover)	1
16	<b>HW30392-003</b>	Screw, 6-32 × 0.19 (Sold in quantities of 25)	3
17	<b>01130</b>	Nut, 6-32	3
18	<b>HW07257</b>	Washer (Sold in quantities of 25)	3
19	<b>46491-1</b>	Lower Media Trim Panel, (170XiIII/XiIIIPlus)	1
19	<b>46491-2</b>	Lower Media Trim Panel, (140XiIII/XiIIIPlus and R-140)	1
19	<b>46491-3</b>	Lower Media Trim Panel, (90/96XiIII/XiIIIPlus)	1
20	<b>46836</b>	Spacer	2
21	<b>HW30256-B</b>	Thumb Nut, 6-32 × 0.50 Brass (Sold in quantities of 25)	2
22	<b>38342</b>	Bracket, Front Cover, (170XiIII/XiIIIPlus)	1
22	<b>47342</b>	Bracket, Front Cover, (90/96XiIII/XiIIIPlus)	1
22	<b>48342</b>	Bracket, Front Cover, (140XiIII/XiIIIPlus)	1
23	<b>46049-1</b>	Support Bracket, (170XiIII/XiIIIPlus)	1
23	<b>47049-1</b>	Support Bracket, (90/96XiIII/XiIIIPlus)	1
23	<b>48049-1</b>	Support Bracket (140XiIII/XiIIIPlus)	1

**Bold** = Part available for purchase  
*Italic* = Part not available for purchase, listed and shown for reference only

Figure A • Final Assembly 90/96/140/170XiIII/XiIIIPlus and R-140 Mechanical



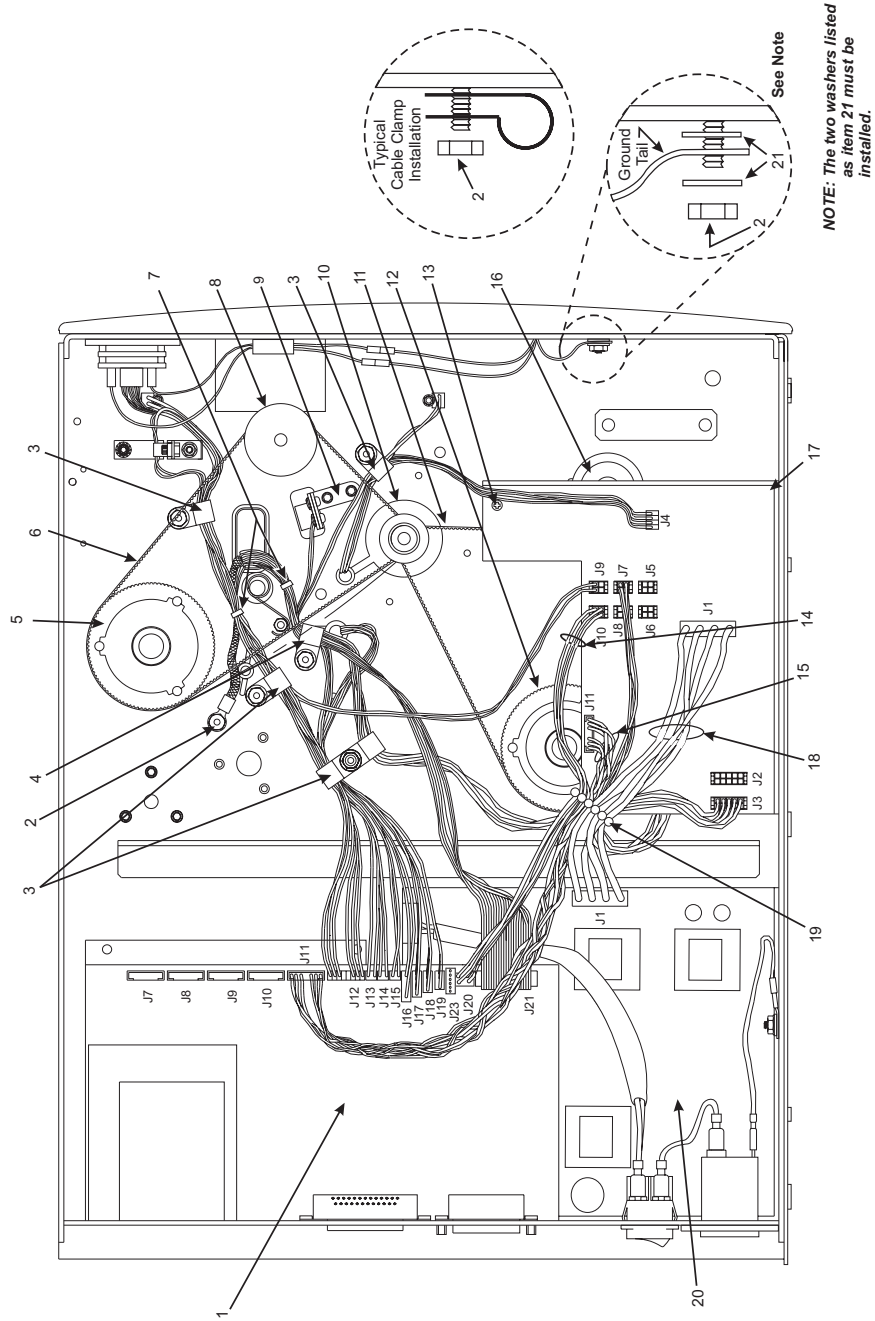
**Table B • Final Assembly Electrical (XiIII and R-140)**

Item	Part Number	Description	Qty.
1	<b>47004M</b>	Main Logic Board Maintenance Kit ( <i>XiIII</i> and R-140)	1
2	<b>01130</b>	Hex Head Washer Nut, 6–32	2
3	<b>01117</b>	Cable Clamp, 0.312	5
4	<b>06222</b>	Cable Clamp, 0.50	1
5	<b>31336M</b>	RTU/MTU Pulley Maintenance Kit (90/140/170/220 <i>XiIII/XiIIIPlus</i> )	1
5	<b>47358M</b>	RTU/MTU Pulley Maintenance Kit, 600dpi (96 <i>XiIII</i> )	1
6	<b>45189-2</b>	Conductive Belt, 0.080P 235T (90/140/170/220 <i>XiIII/XiIIIPlus</i> )	1
6	<b>45189-12</b>	Conductive Belt, 0.080P 245T (96 <i>XiIII</i> ) (600dpi)	1
7	<b>Q06020</b>	Cable-Tie, 0.09W × 3.62L	1
8	<b>40355M</b>	Platen Pulley Maintenance Assembly (90/140/170/220 <i>XiIII/XiIIIPlus</i> )	1
8	<b>47356M</b>	Platen Pulley Maintenance Kit 600 dpi (96 <i>XiIII</i> )	1
9	<b>38226M</b>	Reflect Media Sensor Maintenance Kit	1
10	<b>46199M</b>	Stepper Motor w/Pulley Kit (90/170 <i>XiIII/XiIIIPlus</i> ) (300 dpi)	1
10	<b>46198M</b>	Stepper Motor w/Pulley Kit (140/220 <i>XiIII/XiIIIPlus</i> ) (203 dpi)	1
10	<b>46196M</b>	Stepper Motor w/Pulley Kit (96 <i>XiIII</i> )	1
10	<b>31199M</b>	Stepper Motor (170 <i>XiIIIPlus</i> , 203 dpi, 220 <i>XiIIIPlus</i> , 300 dpi)	1
11	<b>45189-2</b>	Conductive Belt, 0.080P 255T (90/140/170/220 <i>XiIII/XiIIIPlus</i> )	1
11	<b>45189-13</b>	Conductive Belt, 0.080P 265T (96 <i>XiIII</i> )	1
12	<b>31336M</b>	Pulley Ribbon Take-up/Media Take-up Maintenance Kit (90/140/170 <i>XiIII/XiIIIPlus</i> )	1
12	<b>47358M</b>	Pulley Ribbon Take-up/Media Take-up Maintenance Kit (96 <i>XiIII</i> )	1
13	<b>46392-006</b>	Truss-Head Phillips Screw, 6–32 × 0.37	1
14	<b>49604-010</b>	Power Distribution Cable	1
15	<b>49600-010</b>	SP Comm Cable	1
16	<b>30914M</b>	Peel-Off Pulley Maintenance Kit (90/140/170/220 <i>XiIII/XiIIIPlus</i> )	1
16	<b>47915M</b>	Peel-Off Pulley Maintenance Kit (96 <i>XiIII</i> )	1
17	<b>49790M</b>	DC Power Supply Maintenance Kit (220 <i>XiIIIPlus</i> )	1
17	<b>49990M</b>	DC Power Supply Maintenance Kit	1
18	<b>46777</b>	AC Power Cable	1
19	<b>04393</b>	Beaded Cable-Tie	1
20	<b>49780M</b>	AC Power Supply Maintenance Kit	1
21	<b>HW30208</b>	Flat Washer, 0.500 × 0.191 × 0.030 (Sold in quantities of 25)	2

**Bold** = Part available for purchase

*Italic* = Part not available for purchase, listed and shown for reference only

Figure B • Final Assembly Electrical (XIII and R-140)



**Table C • Final Assembly Electrical (XiIIIPlus)**

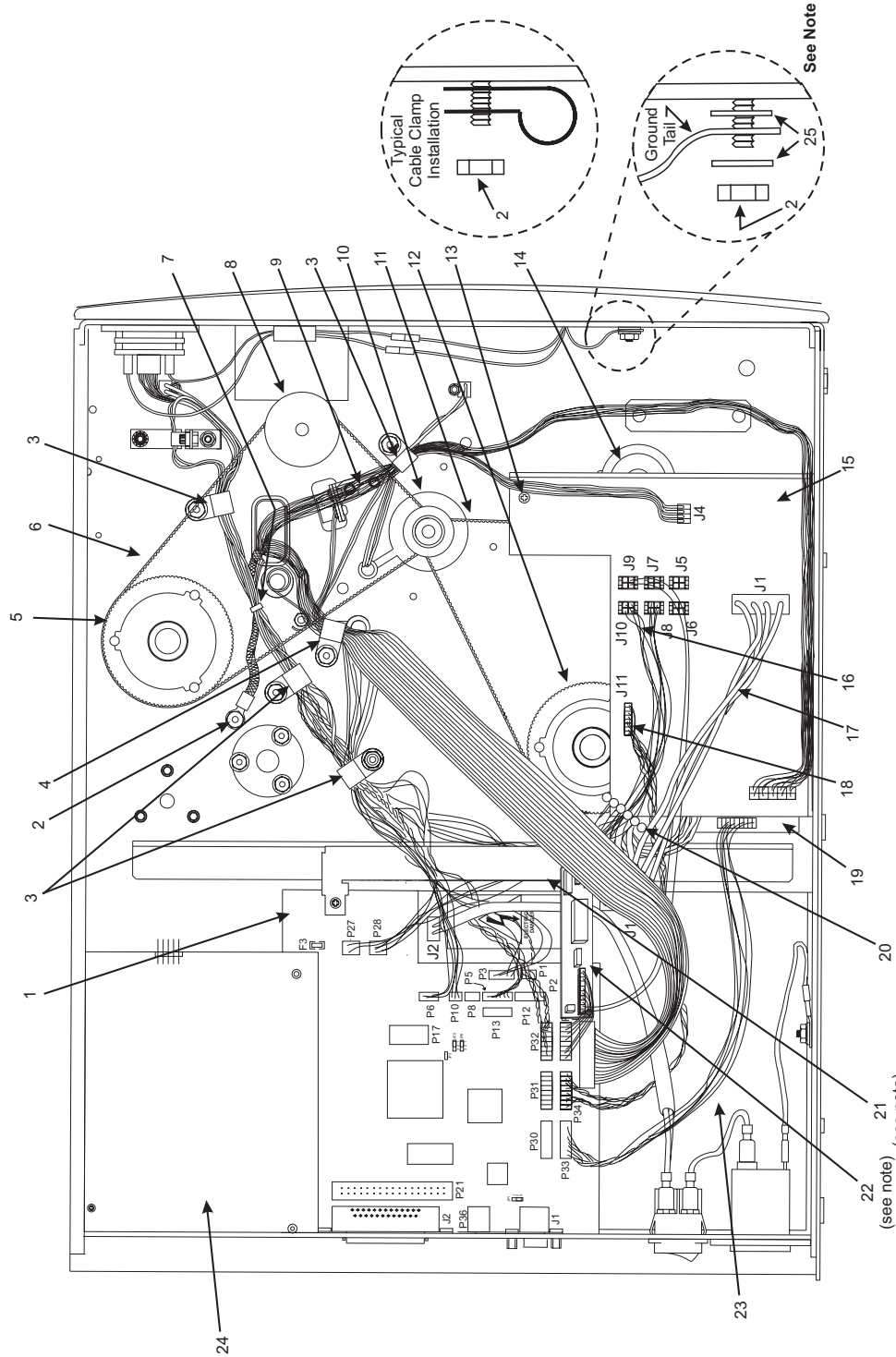
Item	Part Number	Description	Qty.
1	<b>33008M</b>	Main Logic Board <i>XiIIIPlus</i> Maintenance Kit	1
2	<b>01130</b>	Hex Washer Head Nut, 6–32	2
3	<b>01117</b>	Cable-Clamp, 0.312	5
4	<b>06222</b>	Cable-Clamp, 0.50	1
5	<b>31336M</b>	RTU/MTU Pulley Maintenance Kit (90/140/170/220 <i>XiIIIPlus</i> )	1
5	<b>33094-6M</b>	RTU/MTU Pulley Maintenance Kit 600dpi (96 <i>XiIIIPlus</i> )	1
6	<b>45189-5</b>	Conductive Belt, 0.080P 235T (90/140/170/220 <i>XiIIIPlus</i> )	1
6	<b>45189-12</b>	Conductive Belt, 0.080P 245T (96 <i>XiIIIPlus</i> ) (600dpi)	1
7	<b>Q06020</b>	Cable-Tie, 0.09W × 3.62L	1
8	<b>40355M</b>	Platen Pulley Assembly Maintenance (90/140/170/220 <i>XiIIIPlus</i> )	1
8	<b>33079-6M</b>	Platen Pulley Maintenance Kit 600 dpi (96 <i>XiIIIPlus</i> )	1
9	<b>38226M</b>	Reflect Media Sensor Maintenance Kit	1
10	<b>46199M</b>	Stepper Motor w/Pulley Kit (90/170 <i>XiIIIPlus</i> ) (300 dpi)	1
10	<b>46198M</b>	Stepper Motor w/Pulley Kit (140/220 <i>XiIIIPlus</i> ) (203 dpi)	1
10	<b>43420M</b>	Stepper Motor (96 <i>XiIIIPlus</i> ) (600 dpi)	1
10	<b>33084M</b>	Stepper Motor Pulley (96 <i>XiIIIPlus</i> ) (600 dpi)	1
11	<b>45189-2</b>	Conductive Belt, 0.080P 255T (90/140/170/220 <i>XiIIIPlus</i> )	1
11	<b>45189-13</b>	Conductive Belt, 0.080P 265T (96 <i>XiIIIPlus</i> )	1
12	<b>31336M</b>	Maintenance Kit Pulley Ribbon Take-up/Media Take-up (90/140/170 <i>XiIIIPlus</i> )	1
12	<b>33094-6M</b>	Maintenance Pulley Kit RTU/MTU (96 <i>XiIIIPlus</i> )	1
13	<b>46392-006</b>	Screw, 6–32 × 0.37 Truss-Head Phillips	1
14	<b>30914M</b>	Peel-Off Pulley Maintenance Kit (90/140/170/220 <i>XiIIIPlus</i> )	1
14	<b>47915M</b>	Peel-Off Pulley Maintenance Kit (96 <i>XiIII</i> / <i>XiIIIPlus</i> )	1
15	<b>49790M</b>	DC Power Supply Maintenance Kit (220 <i>XiIIIPlus</i> )	1
15	<b>49990M</b>	DC Power Supply Maintenance Kit	1
16	<b>49604-010</b>	PA Cable Power Distribution	1
17	<b>46777</b>	AC Power Cable	1
18	<b>49600-010</b>	PA Cable SP Comm	1
19	<b>49730M</b>	PCB Cutter Control Maintenance Kit	1
20	<b>04393</b>	Beaded Cable-Tie	1
21	<b>33122</b>	Advanced Counter Mounting Bracket (Temporary)	1
22	<b>47020M</b>	Advanced Counter Kit	1

**Bold** = Part available for purchase

*Italic* = Part not available for purchase, listed and shown for reference only



Figure C • Final Assembly Electrical XIIIPlus



NOTE: The two washers listed as item 25 must be installed.

NOTE: The advanced counter board and mounting bracket are in some early models. If Firmware version 42.11.9 or higher is downloaded the advanced counter board is ignored and calculations are done on the main logic board.

**Table D • Final Assembly Mechanical 220XIII (View 1)**

Item	Part Number	Description	Qty.
1	<b>46937</b>	Media Door with Window	1
1	<b>47077M</b>	Media Door Bi-fold with Window	1
2	<b>HW30392-004</b>	Screw, 6–32 × 0.25 (Sold in quantities of 50)	18
3	<b>01861</b>	Supplies Label w/Logo	1
4	22254	Tip-Over Label	1
5	<b>47097</b>	Media Load Label	1
6	32038	Electronics Cover	1
7	<b>46396-006</b>	Screw, 6–32 × 0.37, Tr Ph S Bz	2
8	<b>HW30407-008</b>	Screw, 6–32 × 0.5, 3/64 Allen (Sold in quantities of 25)	4
9	<b>HW07257</b>	Washer, 0.438 × 0.188 × 0.036 (Sold in quantities of 25)	9
10	<b>HW44114</b>	Hex Screw HiLo, M4, 2 × 8 (Sold in quantities of 50)	3
11	<b>22721M</b>	Media Cover Maintenance Kit	1
12	<b>22142</b>	Name Plate 220XIII	1
12	<b>33150-4</b>	Name Plate 220XIII <i>Plus</i>	1
13	<b>22021</b>	Panel Membrane Switch	1
14	<b>22492M</b>	Switch Panel Maintenance Kit	1
15	<b>22342</b>	Old Style Front Cover, 220XIII	1
15	<b>33036-4</b>	New Style Front Cover, 220XIII <i>Plus</i>	1
16	<b>46755M</b>	Old Style LCD, Back Light 220XIII <i>Plus</i> (Can be used in new style front cover)	1
16	<b>32043M</b>	New Style LCD, Back Light 220XIII <i>Plus</i> (Can not be used in old style front cover)	1
17	<b>01130</b>	Hex Head Washer Nut, 6-32	4
18	<b>22491</b>	Lower Media Trim Panel	1
19	<b>46837</b>	Spacer	2
20	<b>HW30256-B</b>	Thumb Nut, 6–32 × 0.50 Brass (Sold in quantities of 25)	2
21	<b>22342</b>	Front Cover Bracket	1
22	22049-1	Support Bracket	1
23	<b>22304M</b>	Cover Damper Assembly Maintenance Kit	1
24	44931	E-Ring, 0.218 (5.5 mm)	2
25	<b>44288</b>	Washer, 0.50 × 0.25 × 0.031 (13 mm × 6.5 mm × 0.79 mm)	4
26	<b>22249</b>	Pivot Pin	2
27	22202	Connecting Link	1
28	<b>HW06319</b>	Screw 10–32 × 0.37 (Sold in quantities of 25)	4
29	<b>HW30402-006</b>	Screw 6–32 × 0.37 (Sold in quantities of 25)	3
30	<b>HW10474</b>	Split Washer M4 (Sold in quantities of 25)	3
31	<b>22203</b>	Damper Mounting Bracket	1
<b>Bold</b> = Part available for purchase			
<i>Italic</i> = Part not available for purchase, listed and shown for reference only			

Figure D • Final Assembly 220XIII Mechanical

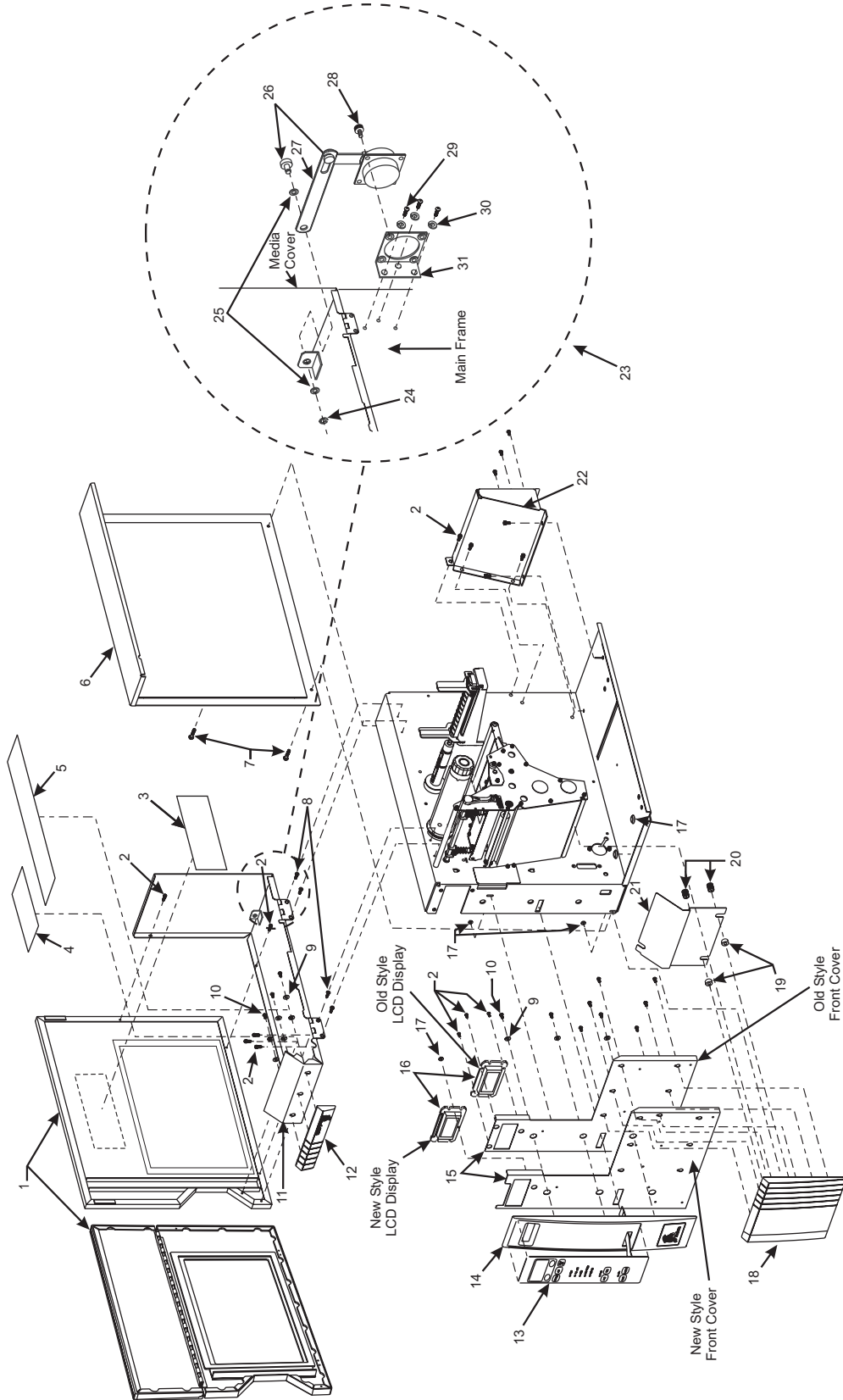
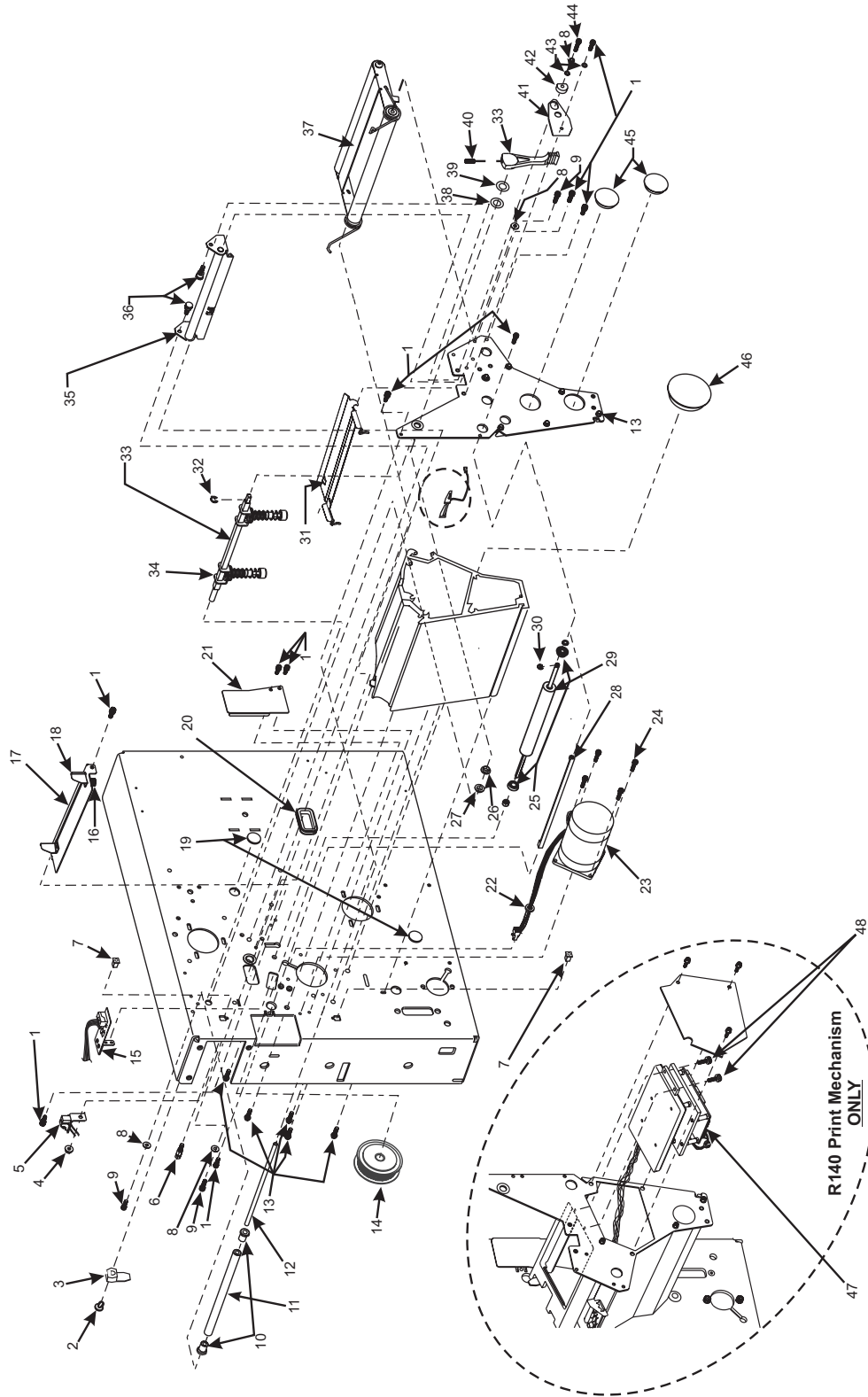


Table E • Print Mechanism Assembly 90/96/140/170*XiIII/XiIIIPlus* and R-140 (View 1)

Item	Part Number	Description	Qty.
1	<b>HW30392-004</b>	Screw, 6–32 × 0.25 (Sold in quantities of 50)	13
2	Ref	Tri Mount Shoulder	1
3	<b>46352M</b>	Flag Maintenance Kit	1
4	<b>HW01130</b>	Nut, 6–32 Hex Washer Head (Sold in quantities of 25)	1
5	<b>22613M</b>	Head Open Switch Assembly	1
6	<b>30266</b>	Head Lift Spring Stop	1
7	<b>40462</b>	Media Take-up Sensor Cover	1
8	<b>HW06268</b>	Lock Washer #6 (Sold in quantities of 25)	2
9	<b>HW30392-006</b>	Screw, 6–32 × 0.37 (Sold in quantities of 25)	3
10	<b>HW48023</b>	Bearing, 0.313 × 0.190 × 0.375 (Sold in quantities of 25)	2
11	<b>47009-1</b>	Roller, 0.37 0.312 × 4.437 (90/96 <i>XiIII/XiIIIPlus</i> )	1
11	<b>47009-3</b>	Roller, 0.37 0.312 × 6.437 (140 <i>XiIII/XiIIIPlus</i> and R-140)	1
11	<b>47009-8</b>	Roller, 0.37 0.312 × 8.437 (170 <i>XiIII/XiIIIPlus</i> )	1
12	<b>30007-1</b>	Roller, Shaft 0.187 × 4.5 (90/96 <i>XiIII/XiIIIPlus</i> )	1
12	<b>30007-3</b>	Roller, Shaft 0.187 × 5.60 (140 <i>XiIII/XiIIIPlus</i> and R-140)	1
12	<b>30007-8</b>	Roller, Shaft (170 <i>XiIII/XiIIIPlus</i> )	1
13	<b>HW44001</b>	Self-Tap Screw, M3.5 × 11mm w/5mm Hex Head (Sold in quantities of 25)	11
14	<b>40355M</b>	Platen Pulley Maintenance Assembly 90/170/220 <i>XiIII</i>	1
14	<b>47356M</b>	Platen Pulley Maintenance Assembly 96 <i>XiIII</i>	1
14	<b>33079-6M</b>	Platen Pulley Maintenance Assembly 96 <i>XiIIIPlus</i>	1
15	<b>38226</b>	Reflective Media Sensor Maintenance Kit	1
16	<b>HW30256-B</b>	Thumb Nut (Sold in quantities of 25)	1
17	<b>30305RM</b>	Media Guide Assembly (90/96 <i>XiIII/XiIIIPlus</i> )	1
17	<b>40305RM</b>	Media Guide Assembly (140 <i>XiIII/XiIIIPlus</i> and R-140)	1
17	<b>46305M</b>	Media Guide Assembly (170 <i>XiIII/XiIIIPlus</i> )	1
18	<b>30033</b>	Adjustable Media Guide	1
19	<b>46267</b>	Hole Plug, 0.5 Diameter × 0.125 thick	12
20	<b>46091</b>	Grommet, for a 1.25 × 0.625 cutout	1
21	<b>30023</b>	Cutter Cover Plate	1
22	<b>46224</b>	Rubber Grommet, 0.312 × 0.34 × 0.109	1
23	<b>46199M</b>	Stepper Motor and Pulley Maintenance Kit (90/170 <i>XiIII/XiIIIPlus</i> 1) (300 dpi)	1
23	<b>46198M</b>	Stepper Motor and Pulley Maintenance Kit (140/220 <i>XiIII/XiIIIPlus</i> and R-140) (203 dpi)	1
23	<b>43420M</b>	Stepper Motor Maintenance Kit (96 <i>XiIII</i> ) (600 dpi)	1
23	<b>47357M</b>	Pulley Maintenance Kit (96 <i>XiIII</i> ) (600 dpi)	1
23	<b>43420M</b>	Stepper Motor Maintenance Kit (96 <i>XiIIIPlus</i> ) (600 dpi)	1
23	<b>33084-6M</b>	Pulley Maintenance Kit (96 <i>XiIIIPlus</i> ) (600 dpi)	1
24	<b>HW30393-006</b>	Screw, 8–32 × 0.37 (Sold in quantities of 25)	4
25	<b>49688</b>	Flanged Ball Bearing, 0.5 × 0.250 × 0.125	2
26	<b>HW30105</b>	Nylon Bearing, 0.312 × 0.251 × 0.078 (Sold in quantities of 25)	1
27	<b>HW46105</b>	Nylon Bearing, 0.312 × 0.251 × 0.140 (Sold in quantities of 25)	1
28	<b>46808</b>	Peel/Tear-Off Bar (170 <i>XiIII</i> )/ <i>XiIIIPlus</i>	1
28	<b>47808</b>	Peel/Tear-Off Bar (90/96 <i>XiIII/XiIIIPlus</i> )	1
28	<b>48808</b>	Peel/Tear-Off Bar (140 <i>XiIII/XiIIIPlus</i> and R-140)	1

**Bold** = Part available for purchase  
*Italic* = Part not available for purchase, listed and shown for reference only

Figure E • Print Mechanism for 90/96/140/170/XIII/XIIIPlus and R-140 (View 1)



**Table E • Print Mechanism Assembly 90/96/140/170XIII/XIIIPlus and R-140  
(View 1) (Continued)**

<b>Item</b>	<b>Part Number</b>	<b>Description</b>	<b>Qty.</b>
29	<b>46278M</b>	Platen Roller Maintenance Kit, 0.780 × 6.73 (170XIII/XIIIPlus)	1
29	<b>47601M</b>	Platen Roller Maintenance Kit, 0.788 × 3.588 (90/96XIII/XIIIPlus)	1
29	<b>40038M</b>	Platen Roller Maintenance Kit, 0.78 × 5.213 (140XIII/XIIIPlus and R-140)	1
30	<b>HW02252</b>	Crescent Ring, 0.250 Yel (Sold in quantities of 100)	2
31	<b>48076</b>	Upper Media Guide (Snap Plate) (90/96XIII/XIIIPlus)	1
31	<b>48043-1</b>	Upper Media Guide (Snap Plate) (170XIII/XIIIPlus)	1
31	<b>48043-2</b>	Upper Media Guide (Snap Plate) (140XIII/XIIIPlus)	1
31	<b>48090M</b>	Upper Media Guide (Snap Plate) R-140	1
32	<b>HWQ10019</b>	E-Ring, Ext, 0.250 (Sold in quantities of 100)	1
33	<b>38202M</b>	Pivot Bar Kit (170XIII/XIIIPlus)	1
33	<b>47202M</b>	Pivot Bar Kit (90XIII 96XIII/XIIIPlus)	1
33	<b>48202M</b>	Pivot Bar Kit (140XIII/XIIIPlus and R-140)	1
34	<b>35099M</b>	Toggle Assembly Maintenance Kit	1 or 2
35	<b>46302-4M</b>	Media Sensor Maintenance Kit (170XIII/XIIIPlus), (Includes Upper and Lower Sensor)	1
35	<b>47302-4M</b>	Media Sensor Maintenance Kit (90/96XIII/XIIIPlus), (Includes Upper and Lower Sensor)	1
35	<b>48302-4M</b>	Media Sensor Maintenance Kit (140XIII/XIIIPlus and R-140), (Includes Upper and Lower Sensor)	1
36	<b>HW48411</b>	Thumb Screw (Sold in quantities of 10)	2
37	<b>46691-1M</b>	Dancer Arm Assembly Maintenance Kit, w/Springs (90/96XIII/XIIIPlus)	1
37	<b>46691-2M</b>	Dancer Arm Assembly Maintenance Kit, w/Springs (140XIII/XIIIPlus and R-140)	1
37	<b>46691-3M</b>	Dancer Arm Assembly Maintenance Kit, w/Springs (170XIII/XIIIPlus)	1
38	<b>33189</b>	Washer	1
39	<b>HW07229</b>	Wave Washer, 0.49 × 0.33 × 0.0075 (Sold in quantities of 50)	1
40	<b>HW30423-003</b>	Set Screw, 8-32 × 0.187 (Sold in quantities of 25)	1
41	<b>40248</b>	Shaft Wear Plate	1
42	<b>40154</b>	Eccentric Pin	1
43	<b>HW30956</b>	Flat Washer 0.207 × 0.146 × 0.030 (Sold in quantities of 10)	2
44	<b>HW30392-008</b>	Screw, 6-32 × 0.50 (Sold in quantities of 25)	1
45	<b>30826</b>	Hole Plug	2
46	30255	Hole Plug	1
47	<b>48888M</b>	RFID Maintenance Kit	1
48	48062	Screw, M3 × 0.5 Nylon	1
<b>Bold</b> = Part available for purchase			
<i>Italic</i> = Part not available for purchase, listed and shown for reference only			



**Notes •** \_\_\_\_\_

---

---

---

---

---

---

---

---

---

---

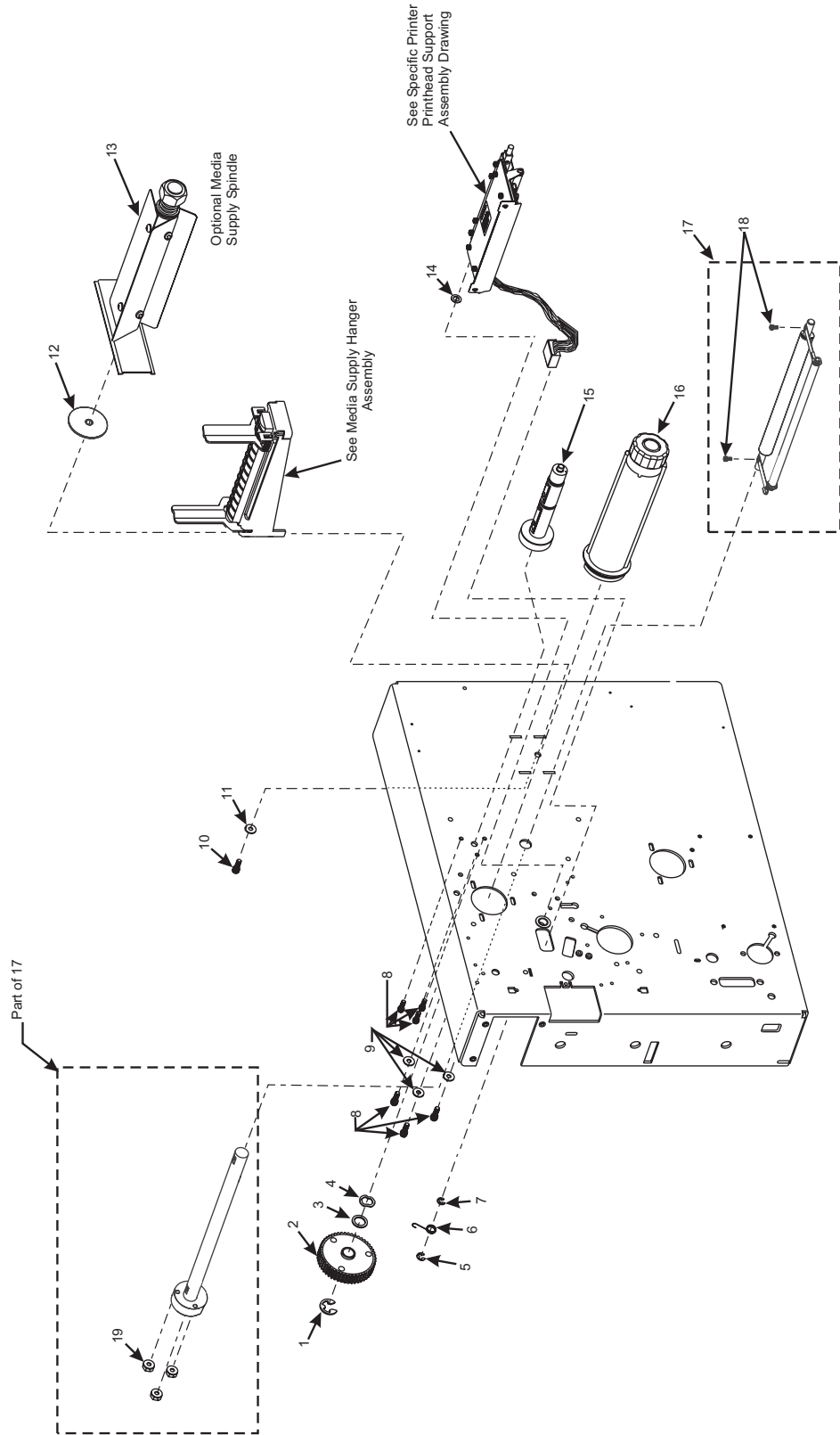
---

Table F • Print Mechanism Assembly 90/96/140/170*XiIII/XiIIIPlus* and R-140 (View 2)

Item	Part Number	Description	Qty.
1	<b>HW30118</b>	E-Ring Ext, 0.500 × 0.042 (Sold in quantities of 25)	1
2	<b>31336M</b>	RTU/MTU Pulley Maintenance Kit (90 <i>XiIII</i> , 140 <i>XiIII</i> , and 170 <i>XiIII</i> )	1
2	<b>47358M</b>	RTU/MTU Pulley Maintenance Kit (96 <i>XiIII</i> )	1
2	<b>330946M</b>	RTU/MTU Pulley Maintenance Kit (96 <i>XiIIIPlus</i> )	1
3	<b>HW30114</b>	Flat Washer, 0.76 × 0.51 × 0.03 (Sold in quantities of 25)	1
4	<b>HW30115</b>	Wave Washer, 0.740 × 0.520 × 0.080 (Sold in quantities of 25)	1
5	<b>HW06250</b>	E-Ring EXT, 0.312 Yel (Sold in quantities of 25)	1
6	<b>HW40027</b>	Torsion Spring (Sold in quantities of 25)	1
7	<b>HW30106</b>	Crescent Ring, External, 0.312 (Sold in quantities of 25)	6
8	<b>HW30393-006</b>	Screw, 8–32 × 0.37 (Sold in quantities of 25)	3
9	<b>HW40193</b>	Flat Washer, 0.406 × 0.172 × 0.048 (Sold in quantities of 25)	1
10	<b>HW30405-006</b>	Cap Screw, 1/4–20 × 0.75 (Sold in quantities of 25)	1
11	<b>HW30466</b>	Washer, 0.26 × 0.63 × 0.06 (Sold in quantities of 25)	1
12	<i>46386</i>	Media Supply Support	1
13	<b>46253M</b>	Media Supply Spindle Kit, 3–Inch (170 <i>XiIII/XiIIIPlus</i> ) (Optional)	1
13	<b>46044M</b>	Media Supply Spindle Kit, 40mm (170 <i>XiIII/XiIIIPlus</i> ) (Optional)	1
13	<b>47253M</b>	Media Supply Spindle Kit, 3–Inch (90/96 <i>XiIII/XiIIIPlus</i> ) (Optional)	1
13	<b>47044M</b>	Media Supply Spindle Kit, 40mm (90/96 <i>XiIII/XiIIIPlus</i> ) (Optional)	1
13	<b>48253M</b>	Media Supply Spindle Kit, 3–Inch (140 <i>XiIII/XiIIIPlus</i> ) (Optional)	1
13	<b>48044M</b>	Media Supply Spindle Kit, 40mm (140 <i>XiIII/XiIIIPlus</i> ) (Optional)	1
14	<b>HW30239</b>	Washer, Crescent, 0.415 × 323 × 0.062 (Sold in quantities of 25)	1
15	<b>46151M</b>	Spindle Ribbon Supply Maintenance Kit (170 <i>XiIII/XiIIIPlus</i> )	1
15	<b>47151M</b>	Spindle Ribbon Supply Maintenance Kit ((90/96 <i>XiIII/XiIIIPlus</i> )	1
15	<b>48151M</b>	Spindle Ribbon Supply Maintenance Kit (140 <i>XiIII/XiIIIPlus</i> )	1
16	<b>46350</b>	Enhanced Ribbon Take-Up Upgrade Kit (170 <i>XiIII/XiIIIPlus</i> )	1
16	<b>47250</b>	Enhanced Ribbon Take-Up Upgrade Kit (90/96 <i>XiIII/XiIIIPlus</i> )	1
16	<b>48250</b>	Enhanced Ribbon Take-Up Upgrade Kit (140 <i>XiIII/XiIIIPlus</i> )	1
17	<b>46813-7M</b>	Compliant Roller Maintenance Kit (170 <i>XiIII/XiIIIPlus</i> Only)	1
18	<b>HW30392-004</b>	Screw, 6-32, 0.25 (Sold in quantities of 50)	2
19	<b>01130</b>	Hex Head Washer Nut, 6–32	3
<b>Bold</b> = Part available for purchase			
<i>Italic</i> = Part not available for purchase, listed and shown for reference only			



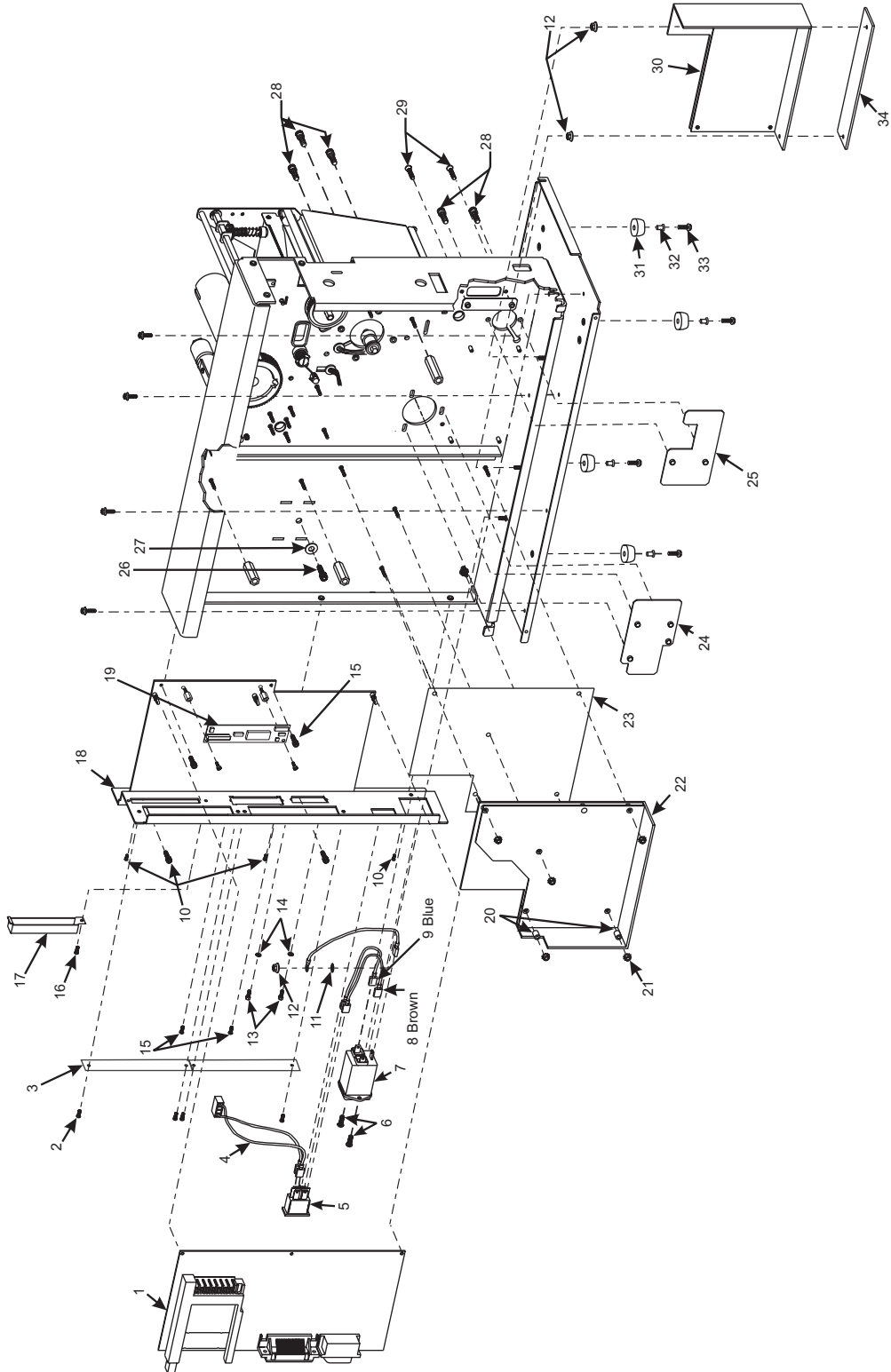
Figure F • Print Mechanism for 90/96/140/170/XIII/XIIIPlus and R-140 (View 2)



**Table G • Print Mechanism XiIII (View 3)**

<b>Item</b>	<b>Part Number</b>	<b>Description</b>	<b>Qty.</b>
1	<b>47004M</b>	Main Logic Board Maintenance Kit	1
2	<b>HW30391-003</b>	Screw, 4-40 × 0.19 (Sold in quantities of 25)	4
3	<b>49036-1</b>	Option Board Cover	1
4	<b>49605-009</b>	Power Switch Cable	1
5	<b>49669</b>	Power Switch	1
6	<b>HW30406-006</b>	Screw, 4-40 × 0.375 (Sold in quantities of 25)	2
7	<b>49673</b>	Power Entry w/Fuse and Ground Wire	1
8	<b>49699-01</b>	Cable (Brown)	1
9	<b>49699-06</b>	Cable (Blue)	1
10	<b>HW46392-006</b>	Truss Head Phillips Screw, 6-32 × 0.37 (Sold in quantities of 25)	7
11	<b>HW01159</b>	Lock Washer, #6 (Sold in quantities of 100)	1
12	<b>HW01130</b>	Hex Washer Head Nut, 6-32 (Sold in quantities of 25)	3
13	<b>HW22416</b>	Hex Standoff, 4-40 (Sold in quantities of 25)	2
14	<b>HW01155</b>	Lock Washer, #6 (Sold in quantities of 100)	2
15	<b>HW07696</b>	Screw, 4-40 × 0.31 (Sold in quantities of 25)	2
16	<b>HW30236</b>	Screw, 4-40 × 0.25 (Sold in quantities of 25)	1
17	<b>49013</b>	Memory Card Cover, (PCMCIA)	1
18	46148	Rear Panel	1
19	<b>47020M</b>	Counter Board Maintenance Kit	1
20	<b>49313</b>	Top Spacer (AC Power Supply)	2
21	<b>HW01822</b>	Nut, 4-40 (Sold in quantities of 25)	5
22	<b>49780M</b>	AC Power Supply Maintenance Kit	1
23	49285	Insulation Pad (AC Power Supply)	1
24	<b>30253</b>	Options Cover Plate	1
25	<b>30023</b>	Cutter Cover Plate	1
26	<b>HW30405-006</b>	Screw, 1/4-20 × 0.38 (Sold in quantities of 25)	1
27	<b>HW30466</b>	Washer, 0.26 × 0.63 × 0.06 (Sold in quantities of 25)	1
28	<b>HW30393-006</b>	Screw, 8-32 × 0.37 (Sold in quantities of 25)	5
28	30393-010	Screw, 8-32 × 0.62 (220XiIII)	3
29	<b>30407-004</b>	Screw, 6-32 × 0.25	2
30	<b>49990M</b>	DC Power Supply Maintenance Kit (90/96/140/170XiIII)	1
30	<b>49790M</b>	DC Power Supply Maintenance Kit (220XiIII)	1
31	<b>HW46015</b>	Bumper (Sold in quantities of 25)	4
32	<b>HW08754</b>	Eye, 0.183 × 0.157 × 0.187 (Sold in quantities of 100)	4
33	<b>HW07435</b>	Hex Lock Screw, 6-32 × 0.37 (Sold in quantities of 100)	4
34	<b>49286</b>	Insulation Pad (DC Power Supply)	1
<b>Bold</b> = Part available for purchase			
<i>Italic</i> = Part not available for purchase, listed and shown for reference only			

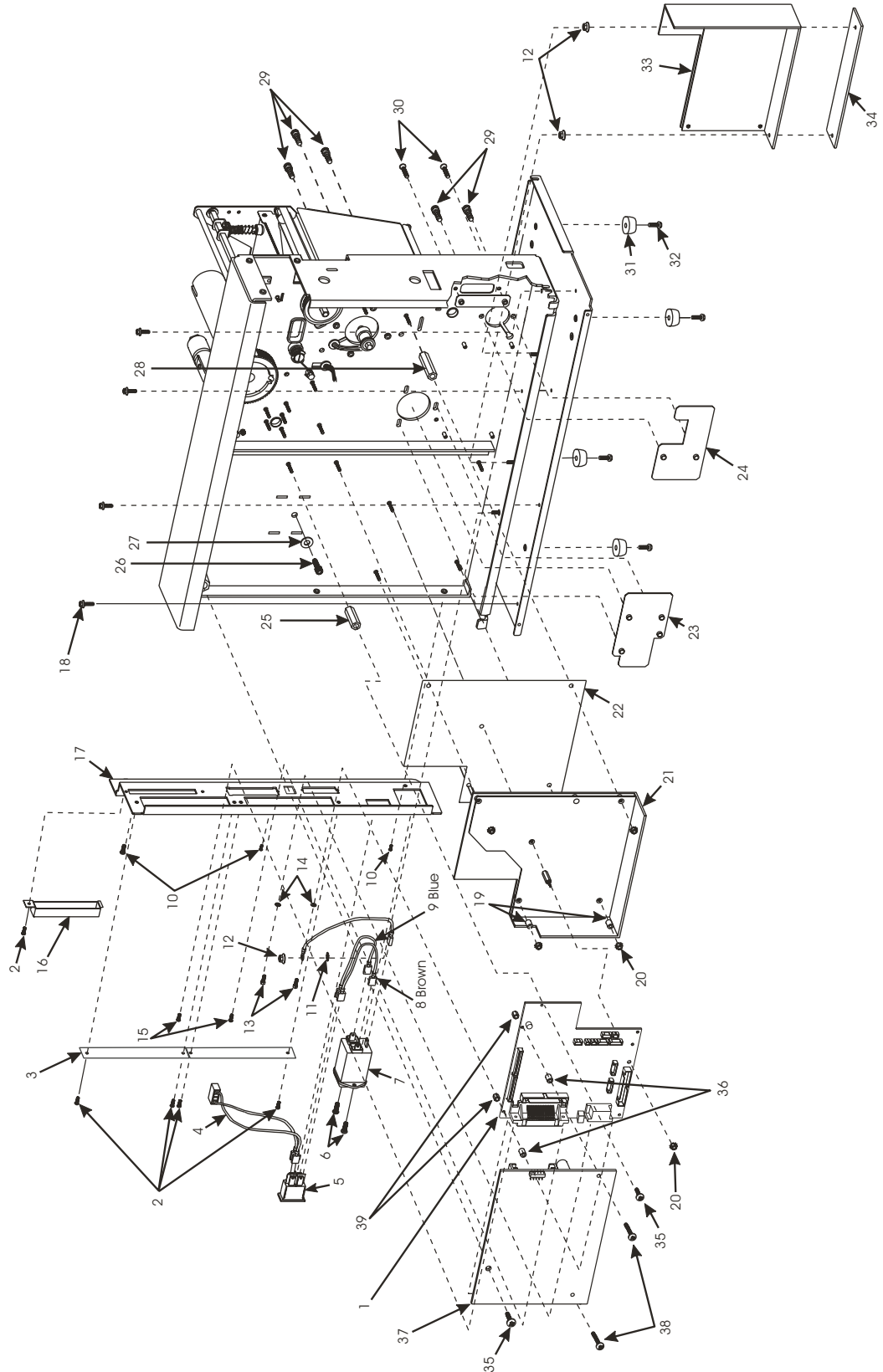
Figure G • Print Mechanism XiIII Printers (View 3)



**Table H • Print Mechanism XiIIIPlus (View 3)**

Item	Part Number	Description	Qty.
1	<b>38000M</b>	Main Logic Board Maintenance Kit	1
2	<b>HW30391-003</b>	Screw, 4-40 × 0.19 (Sold in quantities of 25)	4
3	49036-1	Option Board Cover	1
4	<i>33127-012</i>	Power Switch Cable	1
5	33123	Power Switch	1
6	<b>HW30406-006</b>	Screw, 4-40 × 0.375	2
7	<b>49673</b>	Power Entry w/Fuse and Ground Wire	1
8	33147-01	Cable (Brown)	1
9	33147-06	Cable (Blue)	1
10	<b>HW46392-006</b>	Truss Head Phillips Screw 6-32 × 0.37 (Sold in quantities of 25)	7
11	<b>HW01159</b>	Hex Washer Head Lock Washer #6 (Sold in quantities of 100)	1
12	<b>HW01130</b>	Nut, 6-32 (Sold in quantities of 25)	3
13	<b>HW22416</b>	Hex Standoff, 4-40 (Sold in quantities of 25)	2
14	<b>HW01155</b>	Lock Washer, #6 (Sold in quantities of 100)	2
15	<b>HW07696</b>	Screw, 4-40 × 0.31 (Sold in quantities of 25)	2
16	<b>33112</b>	Memory Card Cover (PCMCIA)	1
17	33104	Rear Panel	1
18	<b>HW06319</b>	Screw, 10-32 × 0.37 Hex (Sold in quantities of 25)	4
19	<b>HW49313</b>	Top Spacer (AC Power Supply) (Sold in quantities of 25)	2
20	<b>HW01822</b>	Nut, 4-40 (Sold in quantities of 25)	5
21	<b>49780M</b>	AC Power Supply Maintenance Kit	1
22	<b>49285</b>	Insulation Pad (AC Power Supply)	1
23	<b>30253</b>	Options Cover Plate	1
24	<b>46254</b>	Cutter Cover Plate	1
25	33325-1	Spacer 4-40 × 1.37	1
26	<b>HW30405-006</b>	Screw, 1/4-20 × 0.38 (Sold in quantities of 25)	1
27	<b>HW30466</b>	Washer, 0.26 × 0.63 × 0.06 (Sold in quantities of 25)	1
28	46325-5	Spacer, 6-32 × 1.56 × 0.357	1
29	<b>HW30393-006</b>	Screw, 8-32 × 0.37 (Sold in quantities of 25)	5
30	30393-010	Screw, 8-32 × 0.62 (220Xi IIIPlus)	3
30	<i>30407-004</i>	Screw, 6-32 × 0.25	2
31	<b>HW46015</b>	Bumper (Sold in quantities of 25)	4
32	<b>HW07435</b>	Hex Lock Screw, 6-32 × 0.37 (Sold in quantities of 100)	4
33	<b>49990M</b>	DC Power Supply Maintenance Kit (90/96/140/170Xi IIIPlus)	1
33	<b>49790M</b>	DC Power Supply Maintenance Kit (220Xi IIIPlus)	1
34	<b>49286</b>	Insulation Pad (DC Power Supply)	1
35	<b>30236</b>	Screw, 4-40 × 0.25	2
36	33291	Spacer, 0.250 x 0.140 x 0.313	2
37	<b>33037M</b>	PCMCIA Board	1
37	<b>79094</b>	Wireless PCMCIA Board	1
38	45798-010	Screw, 4-40 x 10	2
39	<b>78114</b>	Nut, 4-40 x 0.25 x 0.25	2
<p><b>Bold</b> = Part available for purchase  <i>Italic</i> = Part not available for purchase, listed and shown for reference only</p>			

Figure H • Print Mechanism *XiIIIPlus* (View 3)



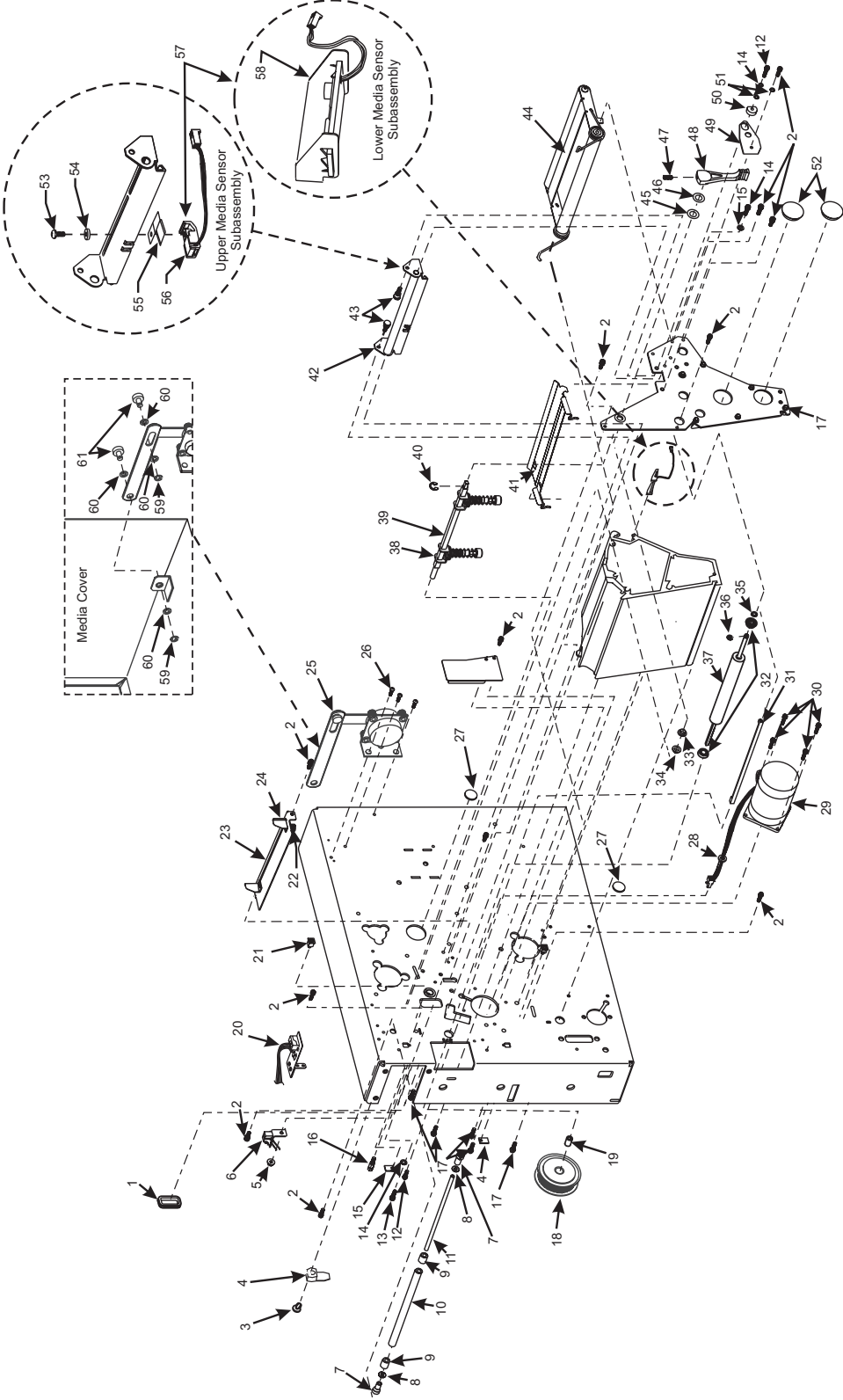
**Table I • Print Mechanism 220XIII (View 1)**

Item	Part Number	Description	Qty.
1	<b>46091</b>	Grommet (for 1.25 × 0.625 cutout)	2
2	<b>HW30392-004</b>	Screw, 6-32 × 0.25 (Sold in quantities of 50)	13
3	Ref	Tri Mount Shoulder	1
4	<b>46352M</b>	Maintenance Kit Flag	1
5	<b>01130</b>	Hex-Head Washer Nut, 6-32	1
6	<b>30353M</b>	Head Open Switch Assembly, Maintenance	1
7	<b>46896</b>	Bushing	2
8	<b>HW46128</b>	Flat Washer, Nylon, 0.505 × 0.192 × 0.015 (Sold in quantities of 25)	2
9	<b>HW48023</b>	Bearing, 0.313 × 0.190 × 0.375 (Sold in quantities of 25)	2
10	<b>30009-10</b>	Roller 0.37 × 0.312	1
11	<b>30007-9</b>	Roller Shaft	1
12	<b>HW30392-008</b>	Screw, 6-32 × 0.50 (Sold in quantities of 25)	2
13	<b>HW30392-006</b>	Screw, 6-32 × 0.25 (Sold in quantities of 25)	2
14	<b>HW06268</b>	Lock Washer, #6 (Sold in quantities of 25)	3
15	<b>40462</b>	Take-Label Sensor Cover	2
16	<b>22266</b>	Spring Stop	1
17	<b>HW44001</b>	Self-Tap Screw, 3.5 × 11 mm with 5 mm Hex Head (Sold in quantities of 25)	11
18	<b>40355M</b>	Platen Pulley Assembly, Maintenance	1
19	<b>22004-2</b>	Spacer	1
20	<b>38226M</b>	Reflective Media Sensor Maintenance Kit	1
21	<b>40462</b>	Expansion Nut, 8/10	1
22	<b>HW30256-B</b>	Thumb Nut, Brass, 6-32 × 0.50 (Sold in quantities of 25)	2
23	<b>22305M</b>	Media Guide Maintenance Kit	1
24	<b>30033</b>	Adjustable Media Guide	1
25	<b>22304M</b>	Damper Cover Maintenance Kit	1
26	<b>HW30402-006</b>	Screw, 6-32 × 0.37 (Sold in quantities of 25)	1
27	<b>46267</b>	Hole Plug, 0.5 Diameter × 0.125 Thick	3
28	<b>46224</b>	Rubber Grommet, 0.312 × 0.34 × 0.109	2
29	<b>31493M</b>	DC Stepper Motor Maintenance Kit	1
30	<b>HW30393-006</b>	Screw, 8-32 × 0.37 (Sold in quantities of 25)	1
31	<b>22808</b>	Peel/Tear-Off Bar	1
32	<b>49688</b>	Flange Ball Bearing, 0.5 × 0.250 × 0.125	2
33	<b>HW30105</b>	Nylon Bearing, 0.312 × 0.251 × 0.078 (Sold in quantities of 25)	1
34	<b>HW46105</b>	Nylon Bearing, 0.312 × 0.251 × 0.140 (Sold in quantities of 25)	1
35	<b>HW30247</b>	Flat Washer, 0.42 × 0.260 × 0.0747 (Sold in quantities of 25)	1
36	<b>HW02252</b>	Crescent Ring, 0.250 (Sold in quantities of 100)	1
37	<b>22101M</b>	Platen Roller Maintenance Kit, 0.780 × 8.73	1
38	<b>30599M</b>	Toggle Assembly, Maintenance	2
39	<b>22222M</b>	Bar Pivot Maintenance Kit	1
40	<b>Q10019</b>	E-ring, Ext 0.250	1
41	<b>48043-4</b>	Upper Media Guide Plate (Snap Plate)	1
42	<b>22302M</b>	Media Sensor Maintenance Kit	1
43	<b>HW48411</b>	Thumb Screw (Sold in quantities of 10)	2
44	<b>22391M</b>	Dancer Arm Assembly, w/Springs	1
45	<i>33189</i>	Washer	1

**Bold** = Part available for purchase

*Italic* = Part not available for purchase, listed and shown for reference only

Figure I • Print Mechanism 220XIII (View 1)



**Table I • Print Mechanism 220XIII (View 1) (Continued)**

<b>Item</b>	<b>Part Number</b>	<b>Description</b>	<b>Qty.</b>
46	<b>HW07229</b>	Curved Washer, 0.49 × 0.33 × 0.0075 (Sold in quantities of 50)	1
47	<b>HW30423-003</b>	Set Screw 8-32 × 0.187 (Sold in quantities of 25)	1
48	<i>30909</i>	Handle	1
49	<b>40248</b>	Wear Shaft Plate	1
50	<b>40154</b>	Eccentric Pin	1
51	<b>30956</b>	Flat Washer, 0.207 × 0.146 × 0.030	2
52	<b>30826</b>	Hole Plug	2
53	<b>30236</b>	Screw, 40/40	1
54	<b>30494</b>	Lower Media Sensor Assembly, 0.32 × 0.119 × 0.062	1
55	<b>40031</b>	Sensor Wire Cover	1
56	<i>46663</i>	Upper Media Sensor Assembly	1
57	<b>22302M</b>	Media Sensors Maintenance Kit	1
58	<i>46664</i>	Lower Media Sensor Assembly	1
59	<i>44931</i>	E-ring, 0.218	2
60	<b>HW44288</b>	Washer, 0.50 × 0.25 × 0.031 (Sold in quantities of 25)	4
61	<i>22249</i>	Pivot Pin	2
<p><b>Bold</b> = Part available for purchase  <i>Italic</i> = Part not available for purchase, listed and shown for reference only</p>			





Notes • \_\_\_\_\_

\_\_\_\_\_

\_\_\_\_\_

\_\_\_\_\_

\_\_\_\_\_

\_\_\_\_\_

\_\_\_\_\_

\_\_\_\_\_

\_\_\_\_\_

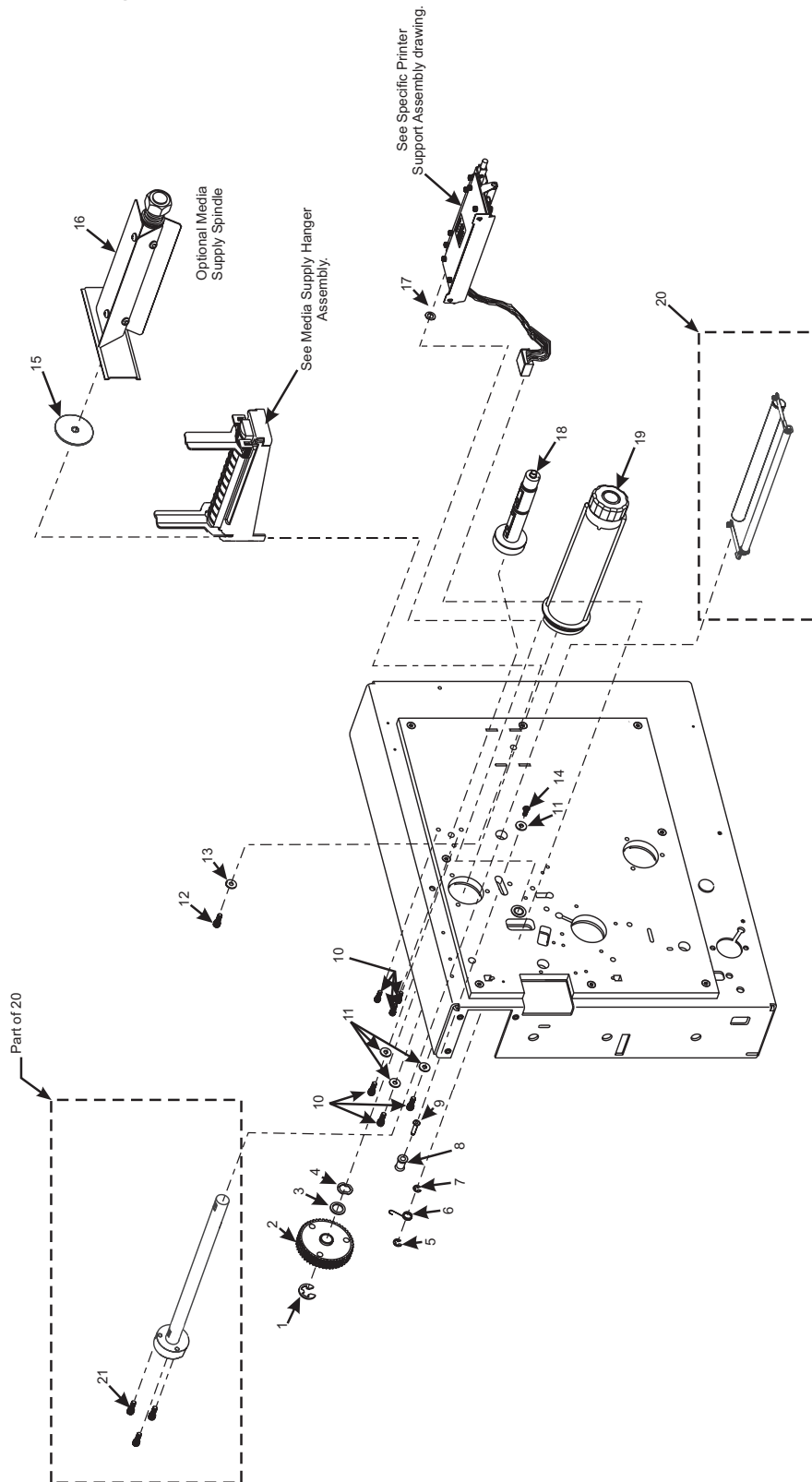
\_\_\_\_\_

\_\_\_\_\_

**Table J • Print Mechanism 220XIII/XIIIPlus (View 2)**

<b>Item</b>	<b>Part Number</b>	<b>Description</b>	<b>Qty.</b>
1	<b>HW30118</b>	E-ring 0.500 × 0.042 (Sold in quantities of 25)	1
2	31336M	RTU/MTU Pulley Maintenance Kit	1
3	<b>HW30114</b>	Flat Washer 0.76 × 0.51 × 0.03 (Sold in quantities of 25)	1
4	<b>HW30115</b>	Wave Washer 0.740 × 0.520 × 0.080 (Sold in quantities of 25)	1
5	<b>HW06250</b>	E-ring 0.312 Yel (Sold in quantities of 25)	1
6	<b>HW40027</b>	Torsion Spring (Sold in quantities of 25)	1
7	<b>HW30106</b>	Crescent Ring, External 0.312 (Sold in quantities of 25)	1
8	30265	Idler Pulley	1
9	22207	Idler Pulley Shaft	1
10	<b>HW30393-006</b>	Screw, 8-32 × 0.37 (Sold in quantities of 25)	5
11	<b>HW40193</b>	Flat Washer 0.406 × 0.172 × 0.048 (Sold in quantities of 25)	4
12	30405-006	Screw, 1/4-20 × 0.38	1
13	<b>HW30466</b>	Washer, 0.26 × 0.63 × 0.06 (Sold in quantities of 25)	1
14	<b>HW30392-004</b>	Screw, 6-32 × 0.25 (Sold in quantities of 50)	1
15	22334	Media Supply Support	1
16	22253M	Media Supply Spindle Maintenance Kit	1
17	<b>HW30239</b>	Crescent Washer 0.415 × 0.323 × 0.062 (Sold in quantities of 25)	1
18	22151M	Ribbon Supply Spindle Maintenance Kit	1
19	22250	Enhanced Ribbon Take-up Kit	1
20	22213-7M	Compliant Roller Maintenance Kit	1
21	30392-014	Screw, 6-32 × 0.87	3
<b>Bold</b> = Part available for purchase			
<i>Italic</i> = Part not available for purchase, listed and shown for reference only			

Figure J • Print Mechanism 220XIII/XIIIPlus (View 2)

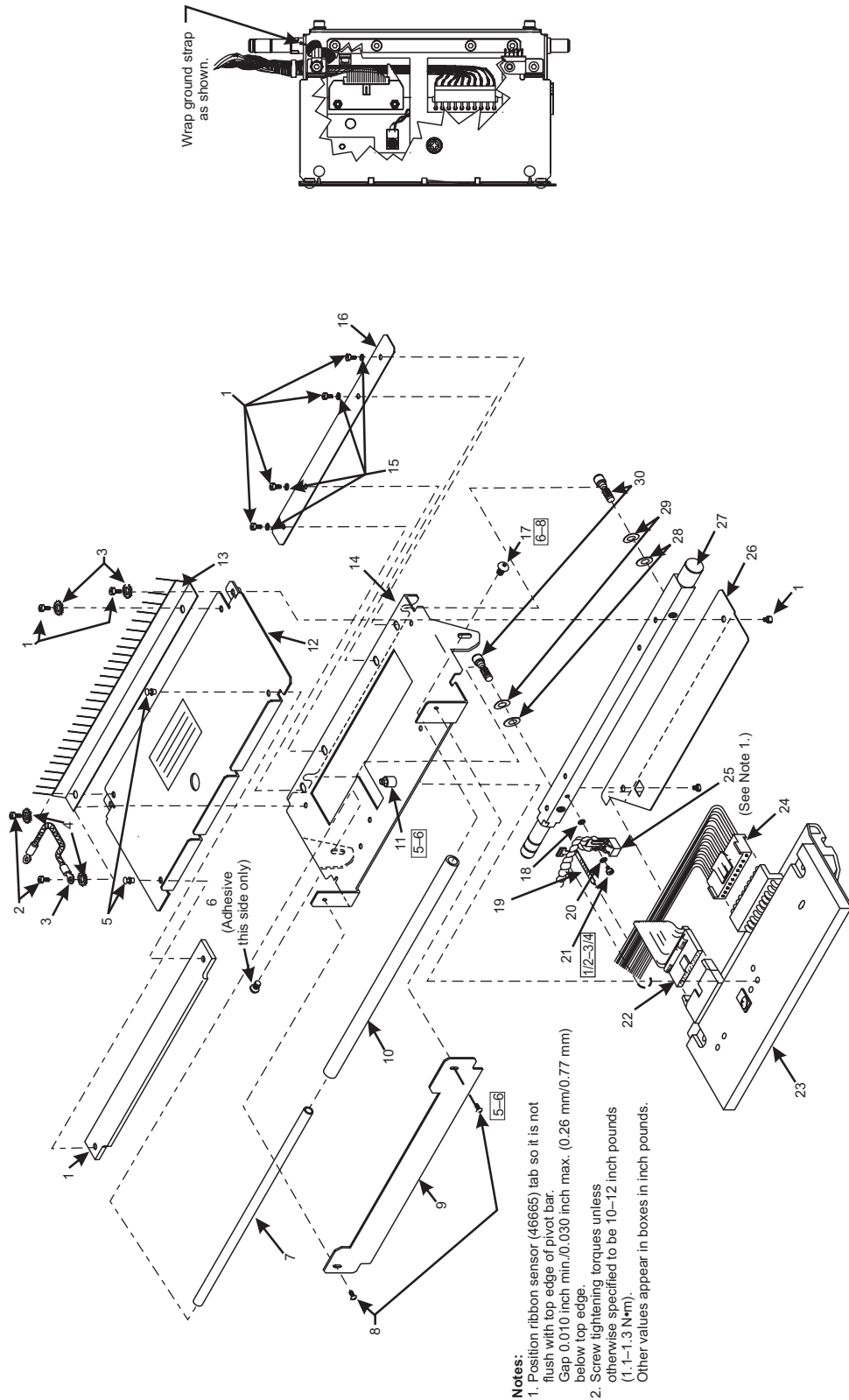


**Table K • Printhead Support Assembly 90/96/140/170*XiIII/XiIIIPlus* and R-140**

<b>Item</b>	<b>Part Number</b>	<b>Description</b>	<b>Qty.</b>
1	<b>47181</b>	Pressure Pad (90/96 <i>XiIII/XiIIIPlus</i> )	1
1	<b>48181</b>	Pressure Pad (140 <i>XiIII/XiIIIPlus</i> and R-140)	1
1	<b>46181</b>	Pressure Pad (170 <i>XiIII/XiIIIPlus</i> )	1
2	<b>HW30392-004</b>	Screw, 6-32 × 0.25 (Sold in quantities of 50)	10
3	<b>30781</b>	Printhead Ground Cable	1
4	<b>HW01159</b>	Flat Washer, 0.250 × 0.125 × 0.028 (Sold in quantities of 100)	4
5	<b>HW48182</b>	Snap Rivet, 0.138 × 0.08 Plastic (Sold in quantities of 10)	2
6	<b>30314R</b>	Adhesive	1
7	<b>30007-5</b>	Roller Shaft, 0.187 × 4.105 (90/96 <i>XiIII/XiIIIPlus</i> )	1
7	<b>30007-4</b>	Roller Shaft, 0.187 × 5.875 (140 <i>XiIII/XiIIIPlus</i> and R-140)	1
7	<b>30007-7</b>	Roller Shaft (170 <i>XiIII/XiIIIPlus</i> )	1
8	<b>HW46882-003</b>	Screw, 4-40 × 3/16 (Sold in quantities of 100)	2
9	<b>47017</b>	Ribbon Strip Plate (90/96 <i>XiIII/XiIIIPlus</i> )	1
9	<b>48017</b>	Ribbon Strip Plate (140 <i>XiIII/XiIIIPlus</i> and R-140)	1
9	<b>46017</b>	Ribbon Strip Plate (170 <i>XiIII/XiIIIPlus</i> )	1
10	<b>48099-2</b>	Roller, 0.332 × 0.212 × 4.050 (90/96 <i>XiIII/XiIIIPlus</i> )	1
10	<b>48099-5</b>	Roller, 0.332 × 0.212 × 5.820 (140 <i>XiIII/XiIIIPlus</i> and R-140)	1
10	<b>48099-7</b>	Roller, 0.332 × 0.212 × 7.796 (170 <i>XiIII/XiIIIPlus</i> )	1
11	<b>22016</b>	Captive Fastener M3 Press-In	1
12	<b>47212</b>	Pressure Plate (90/96 <i>XiIII/XiIIIPlus</i> )	1
12	<b>48212</b>	Pressure Plate (140 <i>XiIII/XiIIIPlus</i> and R-140)	1
12	<b>46170</b>	Pressure Plate (170 <i>XiIII/XiIIIPlus</i> )	1
13	<b>47099</b>	Static Brush (90/96 <i>XiIII/XiIIIPlus</i> )	1
13	<b>31899</b>	Static Brush (140 <i>XiIII/XiIIIPlus</i> and R-140)	1
13	<b>46173</b>	Static Brush (170 <i>XiIII/XiIIIPlus</i> )	1
14	<b>47102</b>	Head Mounting Bracket (90 <i>XiIII/XiIIIPlus</i> )	1
14	<b>47105</b>	Head Mounting Bracket (96 <i>XiIII/XiIIIPlus</i> )	1
14	<b>48003</b>	Head Mounting Bracket (140 <i>XiIII/XiIIIPlus</i> )	1
14	<b>46169</b>	Head Mounting Bracket (170 <i>XiIII/XiIIIPlus</i> )	1
15	<b>HW06268</b>	Washer, #6 Lock (Sold in quantities of 25)	4
16	<b>30013</b>	Washer Plate (90/96 <i>XiIII/XiIIIPlus</i> )	1
16	<b>HW40013</b>	Washer Plate (140 <i>XiIII/XiIIIPlus</i> and R-140) (Sold in quantities of 10)	1
16	<b>46013</b>	Washer Plate (170 <i>XiIII/XiIIIPlus</i> )	1
17	<b>HW30402-006</b>	Screw, 6-32 × 0.37 (Sold in quantities of 25)	1
18	<b>HW30494</b>	Washer, 0.320 × 0.119 × 0.062 (Sold in quantities of 25)	1
19	<b>Q06020</b>	Cable-Tie, 0.09 W × 3.62 L	1
20	<b>HW30236</b>	Screw, 4-40 × 0.25 (Sold in quantities of 25)	1
21	<b>47641</b>	Printhead Data Cable (90/96 <i>XiIII</i> )	1
21	<b>46803M</b>	Printhead Data Cable Kit (96 <i>XiIII</i> )	1
21	<b>33027</b>	Printhead Data Cable Kit (90 <i>XiIIIPlus</i> )	1
21	<b>46682</b>	Printhead Data Cable (140/170 <i>XiIII</i> and R-140)	1
21	<b>33028</b>	Printhead Data Cable (96/140/170 <i>XiIIIPlus</i> )	1

**Bold** = Part available for purchase  
*Italic* = Part not available for purchase, listed and shown for reference only

Figure K • Printhead Support Assembly 90/96XIII, 140XIII, and 170XIII



**Table K • Printhead Support Assembly 90/96/140/170*XiIII/XiIIIPlus* and R-140  
 (Continued)**

<b>Item</b>	<b>Part Number</b>	<b>Description</b>	<b>Qty.</b>
22	<b>47000M</b>	Printhead Maintenance Kit (90 <i>XiIII/XiIIIPlus</i> )	1
22	<b>47500M</b>	Printhead Maintenance Kit (96 <i>XiIII/XiIIIPlus</i> )	1
22	<b>48000M</b>	Printhead Maintenance Kit (140 <i>XiIII/XiIIIPlus</i> and R-140)	1
22	<b>46500M</b>	Printhead Maintenance Kit (170 <i>XiIII/XiIIIPlus</i> )	1
22	<b>22000M</b>	Printhead Maintenance Kit (220 <i>XiII</i> , 220 <i>XiIII</i> , 220 <i>XiIIIPlus</i> ) (200 dpi)	1
22	<b>47426M</b>	Printhead Maintenance Kit (220 <i>XiIIIPlus</i> ) (300 dpi)	1
23	<b>47640</b>	Printhead Power Cable (90/96 <i>XiIII/XiIIIPlus</i> )	1
23	<b>49640-021</b>	Printhead Power Cable (140 <i>XiIII/XiIIIPlus</i> and R-140)	1
23	<b>49640-023</b>	Printhead Power Cable (170 <i>XiIII/XiIIIPlus</i> )	1
24	<b>46665M</b>	Ribbon Sensor Maintenance Kit	1
25	<b>47014</b>	Guard Plate (90/96 <i>XiIII/XiIIIPlus</i> )	1
25	<b>48014</b>	Guard Plate (140 <i>XiIII/XiIIIPlus</i> and R-140)	1
25	<b>46174</b>	Guard Plate (70 <i>XiIII/XiIIIPlus</i> )	1
26	47162	Head Pivot Bar (90/96 <i>XiIII/XiIIIPlus</i> )	1
26	<b>48162</b>	Head Pivot Bar (140 <i>XiIII/XiIIIPlus</i> and R-140)	1
26	<b>46002-1</b>	Head Pivot Bar (170 <i>XiIII/XiIIIPlus</i> )	1
27	<b>HW40193</b>	Flat Washer 0.406 × 0.172 × 0.048 (Sold in quantities of 25)	2
28	<b>HW40194</b>	Curved Washer, 0.344 × 0.172 × 0.006 (Sold in quantities of 25)	2
29	<b>HW46481-1</b>	Adjustment Screw M3.5 (Sold in quantities of 5)	2

**Bold** = Part available for purchase

*Italic* = Part not available for purchase, listed and shown for reference only



Notes •

---

---

---

---

---

---

---

---

---

---

---

**Table L • Printhead Support Assembly 220XIII/XIIIPlus**

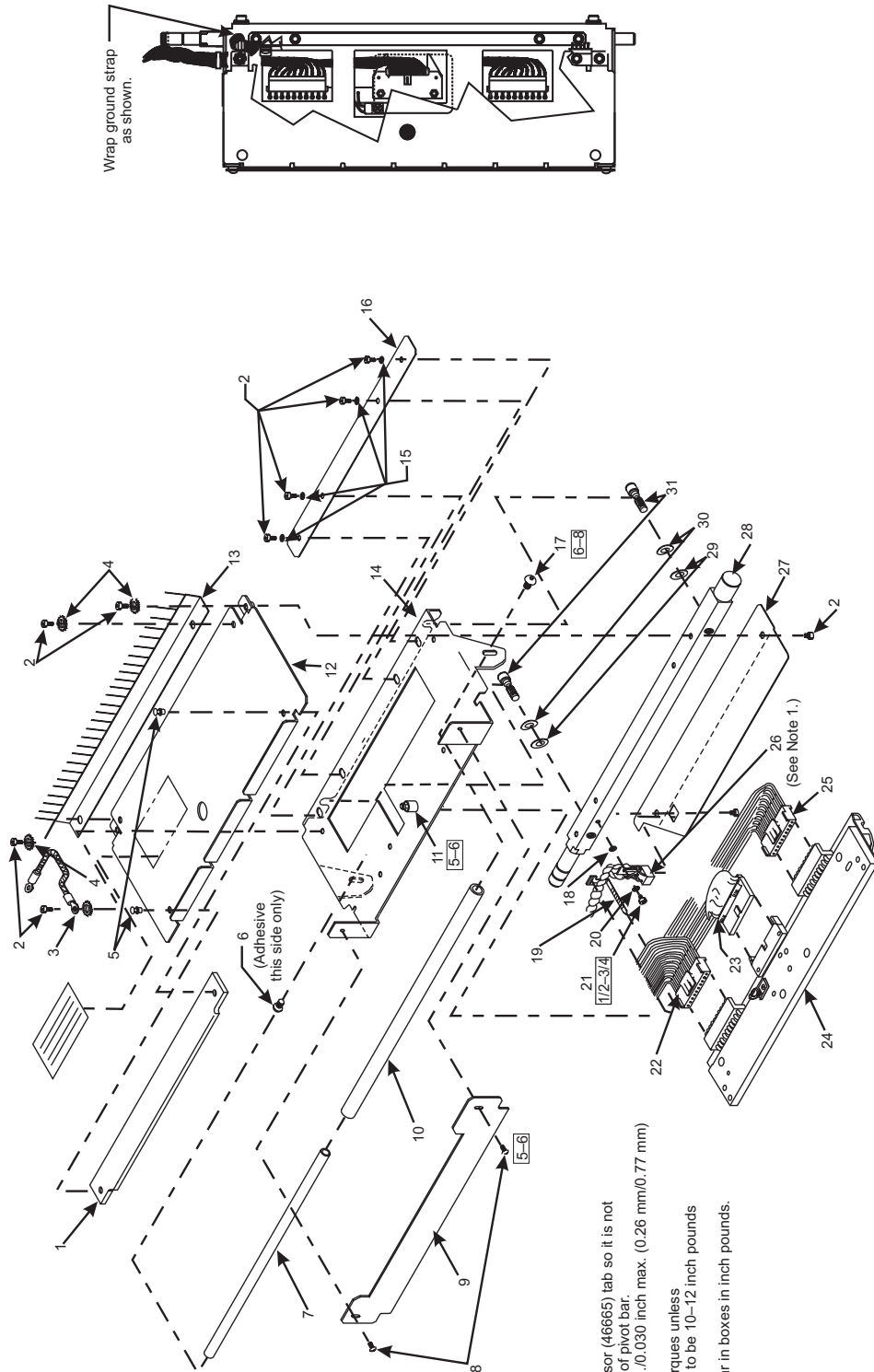
Item	Part Number	Description	Qty.
1	22181	Pressure Pad	1
2	<b>HW30392-004</b>	Screw, 6-32 × 0.25 (Sold in quantities of 50)	10
3	30781	Printhead Ground Cable	1
4	<b>HW01159</b>	Flat Washer 0.250 × 0.125 × 0.028 (Sold in quantities of 100)	4
5	<b>HW48182</b>	Rivet Snap 0.138 × 0.08 Plastic (Sold in quantities of 10)	2
6	<b>30314R</b>	Adhesive	1
7	<b>30007-8</b>	Roller Shaft	1
8	<b>HW46882-003</b>	Screw, 4-40 × 0.19 (Sold in quantities of 100)	2
9	<b>22017</b>	Ribbon Strip Plate	1
10	<b>30009-9</b>	Roller	1
11	<b>22016</b>	Printhead Mounting Screw	1
12	<b>22180</b>	Pressure Plate	1
13	<b>22191</b>	Static Brush	1
14	<b>22003</b>	Head Mounting Bracket	1
15	<b>HW06268</b>	Lock Washer, #6 (Sold in quantities of 25)	7
16	<b>22013</b>	Washer Plate	1
17	<b>HW30402-006</b>	Screw, 6-32 × 0.37 (Sold in quantities of 25)	1
18	<b>HW30494</b>	Washer, 0.320 × 0.119 × 0.062 (Sold in quantities of 25)	1
19	<b>Q06020</b>	Cable-Tie 0.09 W × 3.63 L	1
20	<b>HW30236</b>	Screw, 4-40 × 0.25 (Sold in quantities of 25)	1
21	<b>22640-020</b>	Printhead Data Cable	1
22	<b>22602</b>	Printhead Data Cable	1
23	<b>22000M</b>	Maintenance Kit Printhead	1
23	<b>47426M</b>	Maintenance Kit Printhead (300 dpi)	1
24	<b>22640-025</b>	Printhead Power Cable	1
25	<b>46665M</b>	Ribbon Sensor Maintenance Kit	1
26	<b>22174</b>	Guard Plate	1
27	<b>22002</b>	Head Pivot Bar	1
28	<b>HW40193</b>	Flat Washer, 0.406 × 0.172 × 0.048 (Sold in quantities of 25)	2
29	<b>HW40194</b>	Curved Washer 0.312 × 0.144 × 0.016 (Sold in quantities of 25)	2
30	<b>HW46481-1</b>	Adjustment Screw 6-32 (Sold in quantities of 5)	2

**Bold** = Part available for purchase

*Italic* = Part not available for purchase, listed and shown for reference only



Figure L • Printhead Support Assembly 220XIII/XIIIPlus



- Notes:**
1. Position ribbon sensor (46665) tab so it is not flush with top edge of pivot bar.  
 Gap 0.010 inch min./0.030 inch max. (0.26 mm/0.77 mm) below top edge.
  2. Screw tightening torques unless otherwise specified to be 10–12 inch pounds (1.1–1.3 N·m).  
 Other values appear in boxes in inch pounds.

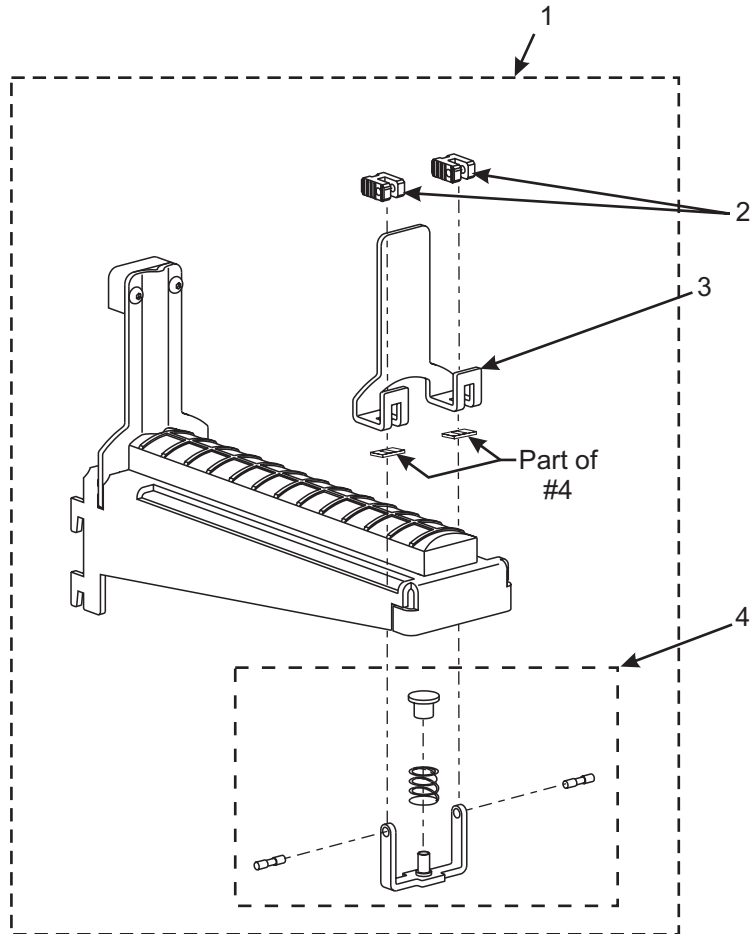
**Table M • Media Supply Hanger**

Item	Part Number	Description	Qty.
1	47153M	Media Hanger Maintenance Kit (90/96 <i>Xi</i> III/ <i>Xi</i> III <i>Plus</i> )	1
1	<b>48153-4M</b>	Media Hanger (Maintenance Kit (140 <i>Xi</i> III/ <i>Xi</i> III <i>Plus</i> and R-140)	1
1	46153M	Media Hanger Maintenance Kit (170 <i>Xi</i> III/ <i>Xi</i> III <i>Plus</i> )	1
1	<b>22153M</b>	Media Hanger Maintenance Kit (220 <i>Xi</i> III/ <i>Xi</i> III <i>Plus</i> )	1
2	48417	Bearing Block	2
3	22395	Outer Edge Guide	1
4	<b>22152M</b>	Link and Pad Maintenance Kit	1

**Bold** = Part available for purchase

*Italic* = Part not available for purchase, listed and shown for reference only

**Figure M • Media Supply Hanger**



**Table N • Optional Media Supply Spindle**

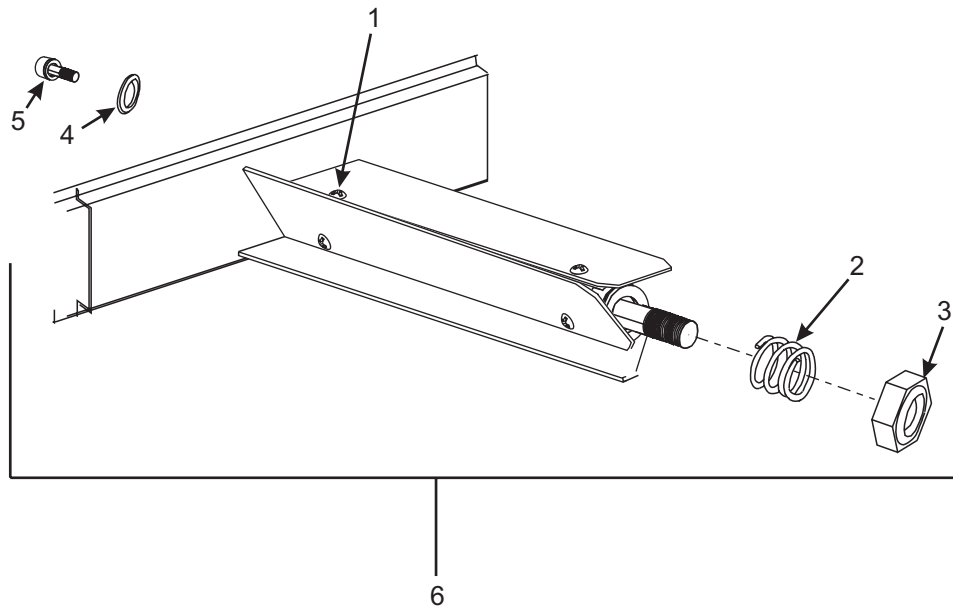
Item	Part Number	Description	Qty.
1	<b>HW30140</b>	Screw, 6-32 x 0.125 (Sold in quantities of 25)	6
2	<b>46068</b>	Compression Spring	1
3	<b>46397-625</b>	Locking Nut, 5/8 x 18	1
4	<b>HW30466</b>	Washer, 0.26 x 0.63 x 0.06 (Sold in quantities of 25)	1
5	30395-012	Screw, 1/4-20 x 0.75	1
6	<b>47253M</b>	Media Supply Spindle 3 inch Spindle Kit complete ( <i>90/96XiIII/XiIIIPlus</i> )	1
6	<b>47044M</b>	40 mm Spindle Complete Kit ( <i>90/96XiIII/XiIIIPlus</i> )	1
6	<b>48253M</b>	Media Supply Spindle 3 inch Spindle Kit complete ( <i>140XiIII/XiIIIPlus</i> and R-140)	1
6	<b>48044M</b>	40 mm Spindle Complete Kit ( <i>140XiIII/XiIIIPlus</i> and R-140)	1
6	<b>46253M</b>	Media Supply Spindle 3 inch Spindle Kit complete ( <i>170XiIII/XiIIIPlus</i> )	1
6	<b>46044M</b>	40 mm Spindle Complete Kit ( <i>170XiIII/XiIIIPlus</i> )	1
6	<b>22253M</b>	Media Supply Spindle 3 inch Spindle Kit complete ( <i>220XiIII/XiIIIPlus</i> )	1

**Bold** = Part available for purchase  
*Italic* = Part not available for purchase, listed and shown for reference only



**Note** • Optional 40 mm media supply spindle not available for 220XiIII.

**Figure N • Optional Media Supply Spindle**

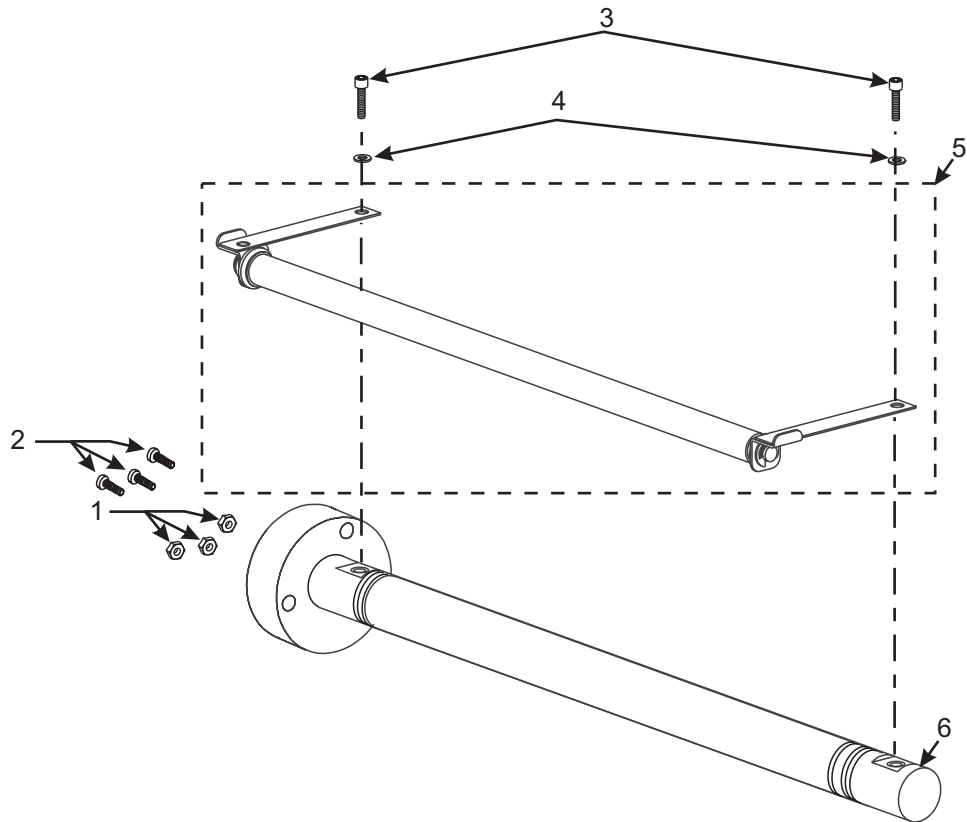


**Table O • Compliant Roller Assembly**

Item	Part Number	Description	Qty.
1	<b>01130</b>	Hex Head Washer Nut, 6–32 (170 <i>Xi</i> III/ <i>Xi</i> III <i>Plus</i> )	3
2	<b>30392-014</b>	Screw, 6–32 × 0.87 (220 <i>Xi</i> III/ <i>Xi</i> III <i>Plus</i> )	3
3	<b>HW30392-004</b>	Screw, 6–32 × 0.25 (Sold in quantities of 50)	2
4	<b>HW46127</b>	Washer, 0.312 × 0.153 × 0.030 (Sold in quantities of 25)	2
5	<b>22213-7M</b>	Compliant Roller Assembly Maintenance Kit (220 <i>Xi</i> III/ <i>Xi</i> III <i>Plus</i> )	1
5	<b>46813-7M</b>	Compliant Roller Assembly Maintenance Kit (170 <i>Xi</i> III/ <i>Xi</i> III <i>Plus</i> )	1
6	46424-1	Shaft, 7.98 (170 <i>Xi</i> III/ <i>Xi</i> III <i>Plus</i> )	1
6	30007-11	Roller Shaft, 0.185 (220 <i>Xi</i> III/ <i>Xi</i> III <i>Plus</i> )	1

**Bold** = Part available for purchase  
*Italic* = Part not available for purchase, listed and shown for reference only

**Figure O • Compliant Roller Assembly**



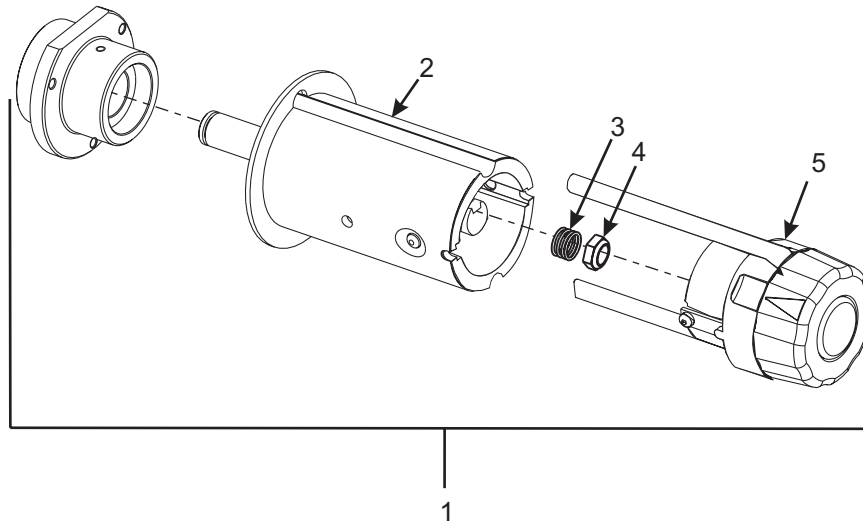
**Table P • Ribbon Take-Up Spindle**

Item	Part Number	Description	Qty.
1	<b>47250</b>	Enhanced RTU Upgrade Kit (90/96 <i>Xi</i> III/ <i>Xi</i> III <i>Plus</i> )	1
1	<b>48250</b>	Enhanced RTU Upgrade Kit (140 <i>Xi</i> III/ <i>Xi</i> III <i>Plus</i> )	1
1	<b>46350</b>	Enhanced RTU Upgrade Kit (170 <i>Xi</i> III/ <i>Xi</i> III <i>Plus</i> )	1
1	<b>22250</b>	Enhanced RTU Upgrade Kit (220 <i>Xi</i> III/ <i>Xi</i> III <i>Plus</i> )	1
2	<b>47251M</b>	Spindle/Clutch Assembly Kit (90/96 <i>Xi</i> III/ <i>Xi</i> III <i>Plus</i> )	1
2	<b>48251M</b>	Spindle/Clutch Assembly Kit (140 <i>Xi</i> III/ <i>Xi</i> III <i>Plus</i> )	1
2	<b>46351M</b>	Spindle/Clutch Assembly Kit (170 <i>Xi</i> III/ <i>Xi</i> III <i>Plus</i> )	1
2	<b>22251M</b>	Spindle/Clutch Assembly Kit (220 <i>Xi</i> III/ <i>Xi</i> III <i>Plus</i> )	1
3	<b>HW47276</b>	Compression Spring (Sold in quantities of 25)	1
4	<b>46397-500</b>	Thin Hex Nut Locking	1
5	<b>47251-2M</b>	End Cap/Release Bar Maintenance Kit (90/96 <i>Xi</i> III/ <i>Xi</i> III <i>Plus</i> )	1
5	<b>48251-2M</b>	End Cap/Release Bar Maintenance Kit (140 <i>Xi</i> III/ <i>Xi</i> III <i>Plus</i> )	1
5	<b>46351-2M</b>	End Cap/Release Bar Maintenance Kit (170 <i>Xi</i> III/ <i>Xi</i> III <i>Plus</i> )	1
5	<b>22251-2M</b>	End Cap/Release Bar Maintenance Kit (220 <i>Xi</i> III/ <i>Xi</i> III <i>Plus</i> )	1

**Bold** = Part available for purchase

*Italic* = Part not available for purchase, listed and shown for reference only

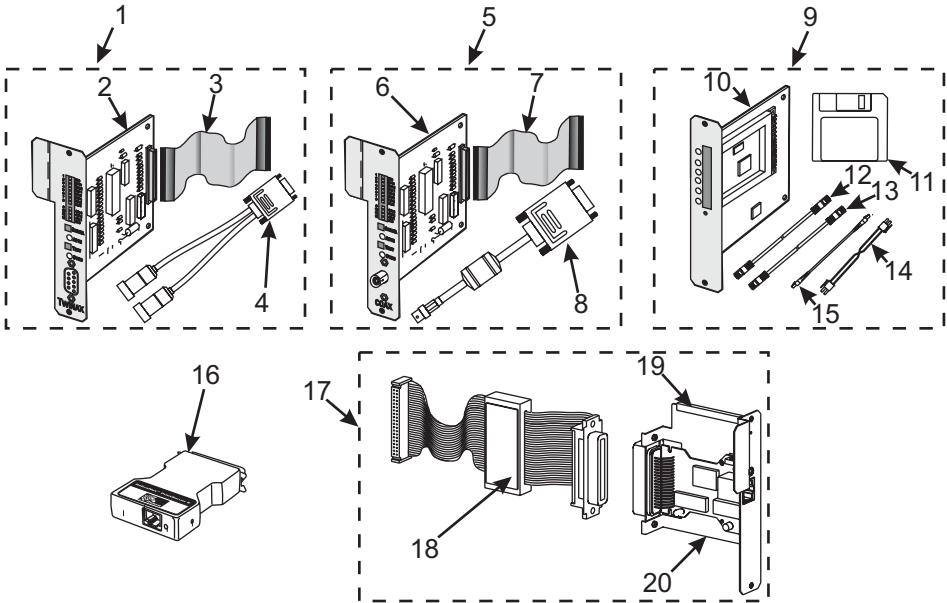
**Figure P • Ribbon Take-Up Spindle Assembly**



**Table Q • Communication Options**

<b>Item</b>	<b>Part Number</b>	<b>Description</b>	<b>Qty.</b>
1	<b>48924</b>	Field Upgrade IBM Twinax Kit	1
2	<b>48752</b>	PCB IBM Twinax Assembly	1
3	<b>30757</b>	Ribbon 40 Option Signal Cable	1
4	<b>30753</b>	Cable IBM Twinax Assembly	1
5	<b>48925</b>	Field Upgrade IBM Coax Kit	1
6	<b>48761</b>	PCB IBM Coax Assembly	1
7	<b>30757</b>	Ribbon 40 Option Signal Cable	1
8	<b>48753</b>	Coax Ext. IBM Cable	1
9	<b>48631</b>	ZebraNet Wireless Card Socket/without ZebraNet PrintServer II	1
9	<b>48632</b>	ZebraNet Wireless Card Socket/with ZebraNet PrintServer II internal	1
9	<b>48633</b>	ZebraNet Wireless Card Socket/with ZebraNet PrintServer II external	1
10	46610	PCB RF Option	1
11	48636	ZebraNet Wireless Setup Disk	1
12	48626	Straight Through Ethernet Cable, 7 feet	1
13	48627	Crossover Ethernet Cable, 7 feet	1
14	<b>49604-016</b>	Power Distribution Cable	1
15	<b>48602</b>	RJ45 1 to 1 10 Base T Cable, 12 inches	1
16	<b>46692</b>	ZebraNet II External Kit Upgrade	1
17	<b>46689</b>	ZebraNet II Internal Kit Upgrade	1
18	<b>46709</b>	Cable Tape ZebraNet II	1
19	<b>47210</b>	Strip Grommet, 2-1/8	1
20	<b>46686</b>	10 Base T Web Internal	1
21	<b>27095M</b>	UHF RFID Reader Board Maintenance Kit (Multi-Protocol) (R170) (Not Illustrated) RFID kits are available for purchase through Zebra Authorized Service Providers only.	1
22	<b>27050M</b>	RFID Antenna Maintenance Kit (Multi-Protocol) (R170) (Not Illustrated) RFID kits are available for purchase through Zebra Authorized Service Providers only.	1
23	<b>27056</b>	Coupler Cable (Multi-Protocol) (R170) (Not Illustrated) RFID kits are available for Zebra Authorized Service Providers only.	1
24	<b>27059-09</b>	Interface Cable (Multi-Protocol) (Not Illustrated) (R170) RFID kits are available for Zebra Authorized Service Providers only.	1
25	<b>49604-010</b>	Power Supply Cable (Multi-Protocol) (R170) (Not Illustrated) RFID kits are available for Zebra Authorized Service Providers only.	1
26	<b>79094</b>	Wireless PCMCIA Option Kit, <i>XiIIIPlus</i> (Not Illustrated)	1
<b>Bold</b> = Part available for purchase			
<i>Italic</i> = Part not available for purchase, listed and shown for reference only			

Figure Q • Communication Options

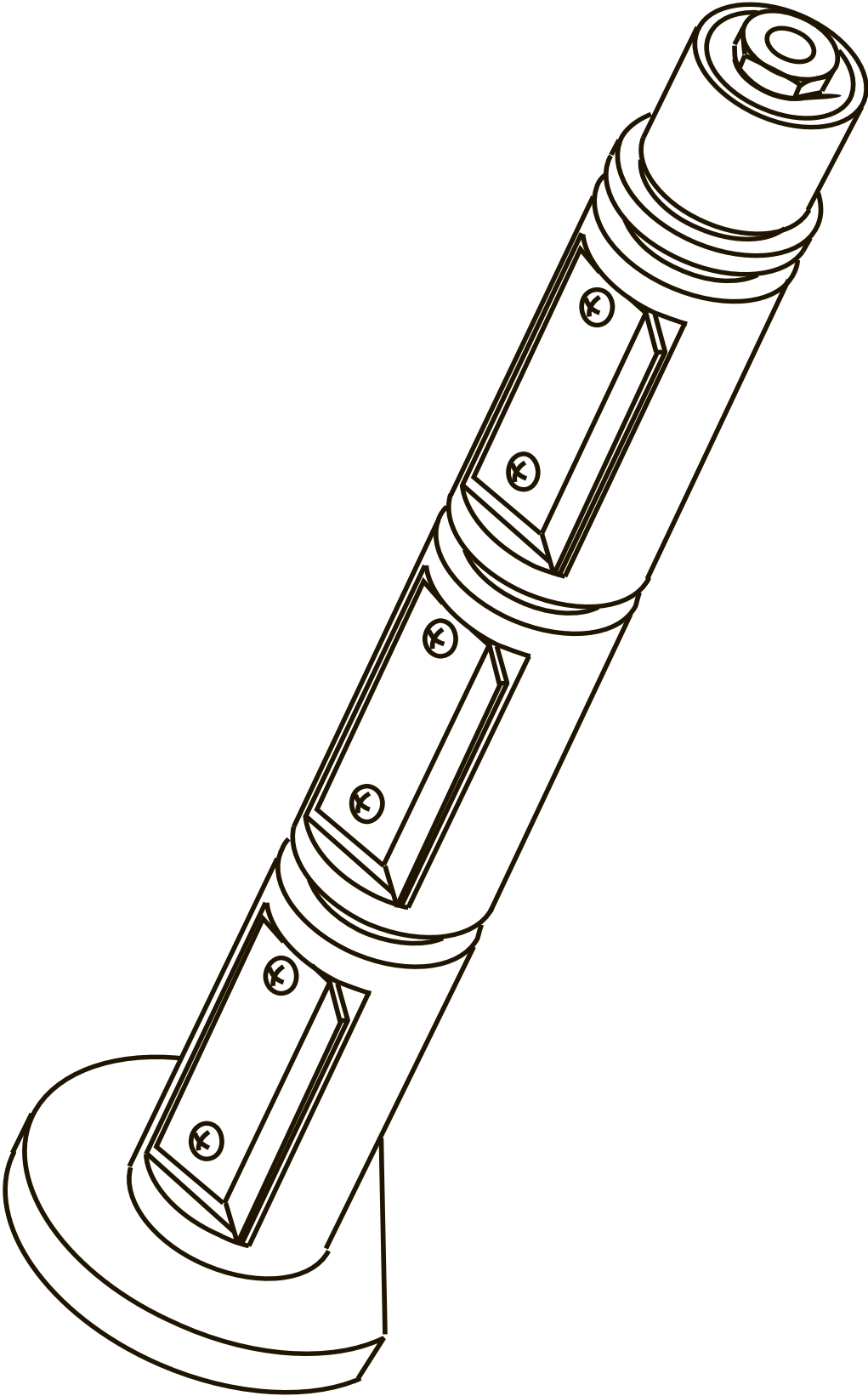


**Table R • Ribbon Supply Spindle Assembly**

<b>Item</b>	<b>Part Number</b>	<b>Description</b>	<b>Qty.</b>
1	<b>47151M</b>	Ribbon Supply Spindle Maintenance Kit (90/96 <i>Xi</i> III/ <i>Xi</i> III <i>Plus</i> )	1
2	<b>48151M</b>	Ribbon Supply Spindle Maintenance Kit (140 <i>Xi</i> III/ <i>Xi</i> III <i>Plus</i> )	1
3	<b>46151M</b>	Ribbon Supply Spindle Maintenance Kit (170 <i>Xi</i> III/ <i>Xi</i> III <i>Plus</i> )	1
4	<b>22151M</b>	Ribbon Supply Spindle Maintenance Kit (220 <i>Xi</i> III/ <i>Xi</i> III <i>Plus</i> )	1
5	<b>30070-2</b>	Inner Ribbon Supply Blade (90/96 <i>Xi</i> III/ <i>Xi</i> III <i>Plus</i> )	1
6	<b>HW30401-002</b>	Screw, 4–40 × 0.12 (Sold in quantities of 25)	8 Max
7	<b>30070-1</b>	Outer Ribbon Supply Blade (90/96 <i>Xi</i> III/ <i>Xi</i> III <i>Plus</i> )	1
8	<b>40070-2</b>	Inner Ribbon Supply Blade (140/170/220 <i>Xi</i> III/ <i>Xi</i> III <i>Plus</i> )	1
9	<b>40070-1</b>	Outer Ribbon Supply Blade (140/170/220 <i>Xi</i> III/ <i>Xi</i> III <i>Plus</i> )	3 Max
10	<b>HW46211</b>	Compression Spring, 0.53 × 0.660 × 0.62 (Sold in quantities of 10)	1
11	<b>38042</b>	Torsion Spring, 0.739 × 0.805	1
12	<b>47171</b>	Ribbon Spindle Spring Housing	1
13	<b>HW46397-375</b>	Locking Thin Hex Nut (Sold in quantities of 25)	1
<b>Bold</b> = Part available for purchase			
<i>Italic</i> = Part not available for purchase, listed and shown for reference only			



Figure R • Ribbon Supply Spindle Assembly



**Table S • Media Rewind Assembly**

<b>Item</b>	<b>Part Number</b>	<b>Description</b>	<b>Qty.</b>
1	<b>47383M</b>	Rewind Plate Assembly Maintenance (90/96 <i>XiIII/XiIIIPlus</i> )	1
1	<b>48383M</b>	Rewind Plate Assembly Maintenance (140 <i>XiIII/XiIIIPlus</i> )	1
1	<b>46383M</b>	Rewind Plate Assembly Maintenance (170 <i>XiIII/XiIIIPlus</i> )	1
1	<b>22383M</b>	Rewind Plate Assembly Maintenance (220 <i>XiIII/XiIIIPlus</i> )	1
2	<b>30914M</b>	Lower Platen Pulley Assembly (90/140/170/220 <i>XiIII/XiIIIPlus</i> )	1
2	<b>47915M</b>	Lower Platen Pulley Maintenance Kit (96 <i>XiIII/XiIIIPlus</i> )	1
3	<b>30265</b>	Idler Pulley (90/96,140,170 <i>XiIII/XiIIIPlus</i> )	1
3	<b>22265</b>	Idler Pulley (220 <i>XiIII/XiIIIPlus</i> )	1
4	<b>30207</b>	Idler Pulley Shaft (90/96,140,170 <i>XiIII/XiIIIPlus</i> )	1
4	<b>22207</b>	Idler Pulley Shaft (220 <i>XiIII/XiIIIPlus</i> )	1
5	<b>45189-5</b>	Rewind Drive Belt, 0.080P 235T (90/140/170/220 <i>XiIII/XiIIIPlus</i> )	1
5	<b>45189-12</b>	Rewind Drive Belt, 0.080P 245T (96 <i>XiIII/XiIIIPlus</i> )	1
6	<b>HW30118</b>	E-Ring, External 0.500 × 0.042 (Sold in quantities of 25)	1
7	<b>31336M</b>	MTU/RTU Pulley Maintenance Kit (90/140/170/220 <i>XiIII/XiIIIPlus</i> )	1
7	<b>47358M</b>	Pulley MTU Maintenance Kit (96 <i>XiIII</i> )	1
7	<b>33094-6M</b>	Pulley MTU Maintenance Kit (96 <i>XiIIIPlus</i> )	1
8	<b>HW30114</b>	Flat Washer, 0.76 × 0.51 × 0.03 (Sold in quantities of 25)	1
9	<b>HW30115</b>	Wave Washer, 0.740 × 0.520 × 0.080 (Sold in quantities of 25)	1
10	<b>HW30393-006</b>	Screw, 8–32 × 0.31 (Sold in quantities of 25)	3
11	<b>HW07435</b>	Screw, 6–32 × 0.37 (Sold in quantities of 100)	2
12	<b>HW40193</b>	Flat Washer, 0.406 × 0.172 × 0.048 (Sold in quantities of 25)	1
13	<b>46609-4M</b>	Take-Label Sensor Maintenance Kit (Includes Lower Sensor)	1
14	<b>47155M</b>	Spindle Media Rewind Maintenance Kit (90/96 <i>XiIII/XiIIIPlus</i> )	1
14	<b>48155M</b>	Spindle Media Rewind Maintenance Kit (140 <i>XiIII/XiIIIPlus</i> )	1
14	<b>46249M</b>	Spindle Media Rewind Maintenance Kit (170 <i>XiIII/XiIIIPlus</i> )	1
14	<b>22155M</b>	Spindle Media Rewind Maintenance Kit (220 <i>XiIII/XiIIIPlus</i> )	1
15	<b>HW40193</b>	Flat Washer, 0.406 × 0.172 × 0.048 (Sold in quantities of 50)	3
16	<b>HW30392-004</b>	Screw, 6-32 × 0.25 (Sold in quantities of 50)	2
17	<b>HW02252</b>	Crescent Ring, 0.25 (Sold in quantities of 100)	2
18	<b>40019</b>	Plate, Roller Adjustment	1
19	<b>HW30247</b>	Flat Washer, 0.42 × 0.262 × 0.0740 (Sold in quantities of 25)	1
20	<b>HW30261</b>	Flat Washer, 0.442 × 0.255 × 0.020 (Sold in quantities of 25)	2
21	<b>47601M</b>	Lower Platen Roller Maintenance Kit, 0.78 × 3.588 (90/96 <i>XiIII/XiIIIPlus</i> )	1
21	<b>40038M</b>	Lower Platen Roller Maintenance Kit, 0.78 × 5.213 (140 <i>XiIII/XiIIIPlus</i> )	1
21	<b>46278M</b>	Lower Platen Roller Maintenance Kit, 0.78 × 6.73 (170 <i>XiIII/XiIIIPlus</i> )	1
21	<b>22101M</b>	Lower Platen Roller Maintenance Kit, 0.78 × 8.73 (220 <i>XiIII/XiIIIPlus</i> )	1
22	<b>49688</b>	Ball Bearing, 0.50 × 0.25 × 0.125	2

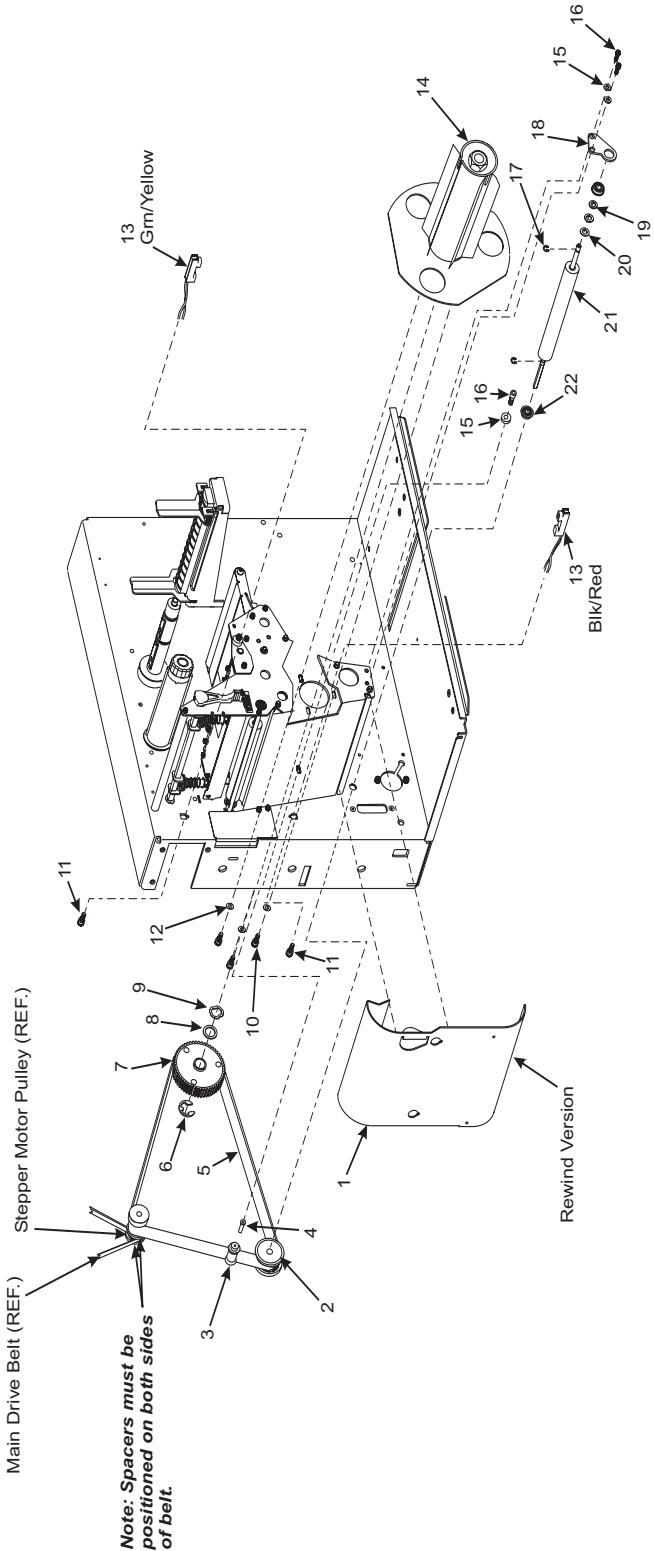
**Bold** = Part available for purchase

*Italic* = Part not available for purchase, listed and shown for reference only



**Note** • All components must be oil free. O-rings, wear plates, and friction clutches must be handled with care to prevent oil or grease.

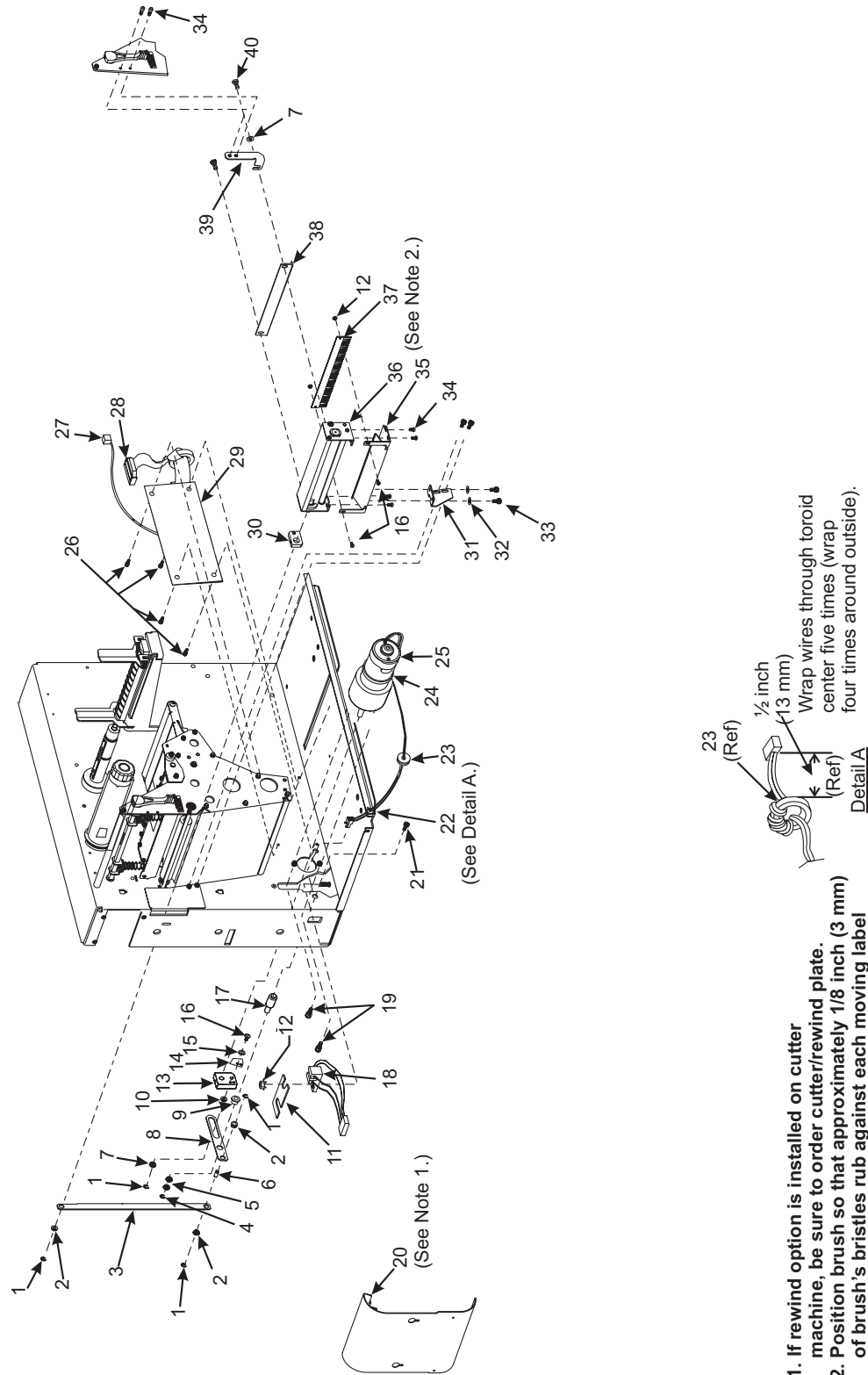
Figure S • Media Rewind Assembly



**Table T • Cutter Option Assembly (View 1)**

Item	Part Number	Description	Qty.
1	<b>HW02133</b>	E-Ring, 0.188 Black (Sold in quantities of 50)	4
2	<b>HW30199</b>	Bearing, 0.375 × 0.189 × 0.125 (Sold in quantities of 25)	3
3	<b>30214</b>	Main Link	1
4	<b>HWQ10019</b>	E-ring, 0.250 Black (Sold in quantities of 100)	1
5	<b>HW30210</b>	Flat Washer, 0.564 × 0.384 × 0.060 (Sold in quantities of 10)	2
6	<b>30217-1</b>	Link Pin, 0.187 Dia.	1
7	<b>HW30208</b>	Flat Washer, 0.500 × 0.191 × 0.030	2
8	<b>30215</b>	Slotted Link	1
9	<b>HW30198</b>	Bearing 0.500 × 0.252 × 0.250 (Sold in quantities of 10)	1
10	<b>30133</b>	Ball Bearing 0.375 × 0.187 × 0.125	1
11	<b>30313</b>	Cutter Opto Wire Clamp	1
12	<b>HW01822</b>	Nut, 4–40 (Sold in quantities of 25)	5
13	<b>30380M</b>	Lower Drive Arm Maintenance Kit	1
14	<b>30219</b>	Flag, Sensor	1
15	<b>HW01155</b>	Washer, Lock #4 (Sold in quantities of 100)	1
16	<b>HW30236</b>	Screw 4-40 × 0.25 (Sold in quantities of 25)	3
17	<b>30216</b>	Post, Pivot	1
18	<b>46618</b>	Cutter Sensor	1
19	<b>HW30394-005</b>	Screw, 10-32 × 0.312 (Sold in quantities of 25)	2
20	<b>30382RM</b>	Cutter/Rewind Plate Maintenance Assembly (90/96 <i>XiIII/XiIIIPlus</i> )	1
20	<b>40382RM</b>	Cutter/Rewind Plate Maintenance Assembly (140 <i>XiIII/XiIIIPlus</i> )	1
20	<b>46382M</b>	Cutter/Rewind Plate Maintenance Assembly (170 <i>XiIII/XiIIIPlus</i> )	1
20	<b>22382M</b>	Cutter/Rewind Plate Maintenance Assembly (220 <i>XiIII/XiIIIPlus</i> )	1
21	<b>HW30405-006</b>	Screw, ¼–20 × 0.38 (90/96 <i>XiIII</i> , 140 <i>XiIII</i> , 170 <i>XiIII/XiIIIPlus</i> ) (Sold in quantities of 25)	1
21	<b>HW30405-008</b>	Screw, ¼–20 × 0.50 (220 <i>XiIII/XiIIIPlus</i> ) (Sold in quantities of 25)	1
22	<b>HW44632</b>	Ferrite Ring 1.1 × 0.75 (Sold in quantities of 10)	1
23	<b>HW46224</b>	Rubber Grommet (Sold in quantities of 10)	1
24	<b>08449</b>	Cable-Tie, 0.187 W × 11.5 L	1
25	<b>30374M</b>	Cutter Motor Maintenance Assembly	1
26	<b>HW30391-003</b>	Screw, 4–40 × 0.19 (Sold in quantities of 25)	4
27	<b>49604-010</b>	Power Distribution Cable	1
28	<b>49600-012</b>	Comm Cable	1
29	<b>49730M</b>	PCB Cutter Control Maintenance Kit	1
30	<b>46280M</b>	Arm Drive Upper Maintenance Kit	1
31	<b>30816</b>	Lower Cutter Bracket	1
32	<b>HW40193</b>	Flat Washer, 0.406 × 0.172 × 0.048 (Sold in quantities of 25)	2
33	<b>HW30392-004</b>	Screw, 6–32 × 0.25 (Sold in quantities of 50)	4
34	<b>HW10421</b>	Screw, M4 × 0.7 × 5 (Sold in quantities of 25)	4
35	<b>30819</b>	Cutter Support Bracket (90/96 <i>XiIII</i> )	1
35	<b>40819</b>	Cutter Support Bracket (140 <i>XiIII</i> )	1
35	<b>46819</b>	Cutter Support Bracket (170 <i>XiIII</i> )	1
35	<b>22819</b>	Cutter Support Bracket (220 <i>XiIII</i> )	1
<b>Bold</b> = Part available for purchase			
<i>Italic</i> = Part not available for purchase, listed and shown for reference only			

Figure T • Cutter Option Assembly



**Table T • Cutter Option Assembly (View 1) (Continued)**

Item	Part Number	Description	Qty.
36	<b>30196-100</b>	Cutter Module (90/96 <i>Xi</i> III)	1
36	<b>30196-150</b>	Cutter Module (140 <i>Xi</i> III)	1
36	<b>30196-200</b>	Cutter Module (170 <i>Xi</i> III)	1
36	<b>30196-251</b>	Cutter Module (220 <i>Xi</i> III)	1
37	<b>30320</b>	Carbon Brush, 4.50 × 0.50 (90/96 <i>Xi</i> III)	1
37	<b>40320</b>	Carbon Brush, 6.50 × 0.50 (140 <i>Xi</i> III)	1
37	<b>46320</b>	Carbon Brush, 8.50 × 0.50 (170 <i>Xi</i> III)	1
37	<b>22320</b>	Carbon Brush, 10.47 × 0.50 (220 <i>Xi</i> III)	1
38	<b>30181</b>	Upper Cutter Guide (90/96 <i>Xi</i> III)	1
38	<b>40181</b>	Upper Cutter Guide (140 <i>Xi</i> III)	1
38	<b>46181</b>	Upper Cutter Guide (170 <i>Xi</i> III)	1
38	<b>22193</b>	Upper Cutter Guide (220 <i>Xi</i> III)	1
39	<b>46807</b>	Upper Cutter Bracket	1
40	<b>HWQ10011</b>	Screw, M4 × 0.7 (Sold in quantities of 100)	2

**Bold** = Part available for purchase

*Italic* = Part not available for purchase, listed and shown for reference only

**Figure U • Cutter Option Assembly (View 2)**

